



## COURTHOUSE WAY, SW18

£700,000

- Two Double Bedrooms
- Modern Apartment
- Two Bathrooms
- Large Private Terrace
- Sought After Location
- Energy rating: B





## ABOUT THE HOME

A wonderfully presented two double bedroom modern apartment with a large private terrace in central Wandsworth.

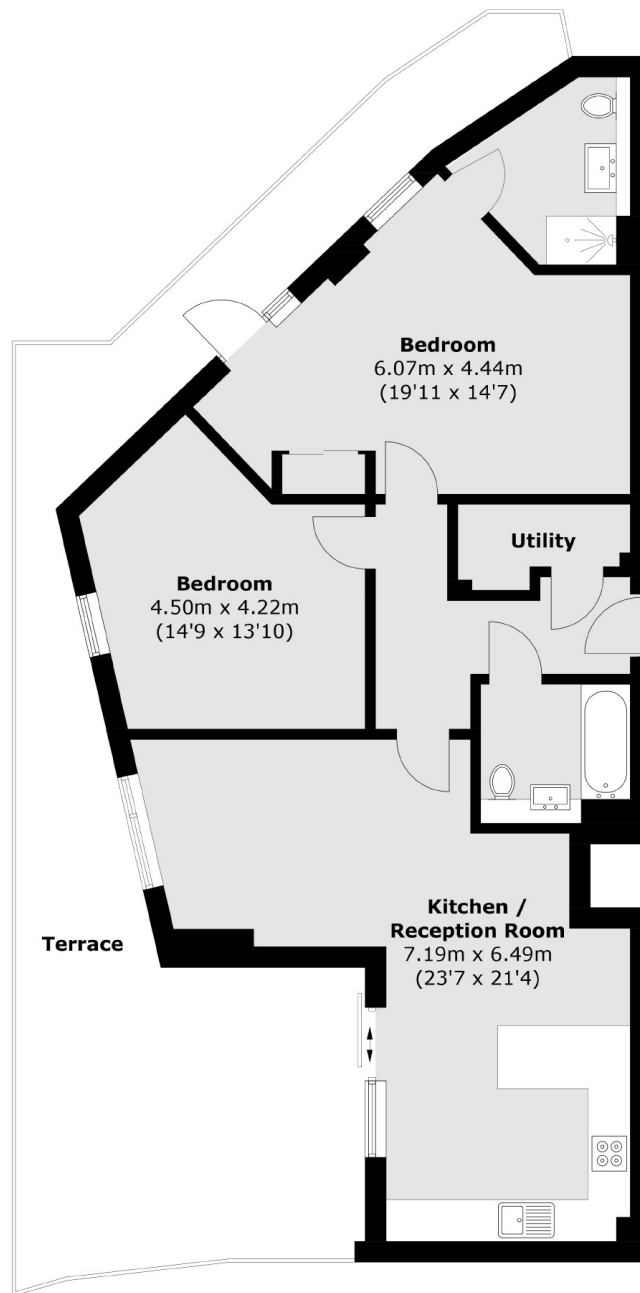
The apartment is exceptionally well presented and comprises of; a large hallway with ample storage and a modern contemporary family bathroom. There is an open plan reception/dining room offering a fantastic entertaining space, modern kitchen finished to a high standard, with direct access onto a large private wrap around terrace which is unique to this apartment alone. There is a generous double bedroom which is flooded with natural light, the principle double bedroom has built in wardrobes, direct access to the private terrace and an en suite bathroom. The development also provides a large communal roof terrace.

This apartment is located in a prime location amongst the shops, restaurants and amenities of Southside Shopping Centre. King George's Park is within walking distance as are Wandsworth Town and Earlsfield mainline stations providing direct links to the City, the West End and outer London.









Total area (approx.): 87.0 sq. m (936.5 sq. ft)  
Terrace: 42.6 sq. m (458.5 sq. ft)

#### JACKSONS EARLSFIELD

372-374 Garratt Lane,  
Earlsfield, London, SW18 4ES  
Sales: 020 8971 7979  
Lettings: 020 8971 7070

Energy Rating: B We aim to make our particulars both accurate and reliable. However they are not guaranteed; nor do they form part of an offer or contract. If you require clarification on any points then please contact us, especially if you're traveling some distance to view. Please note that appliances and heating systems have not been tested and therefore no warranties can be given as to their good working order.