



EARLSFIELD ROAD, SW18

£700,000

- Two Double Bedrooms
- Two Bathrooms
- Victorian Property
- Large Private Garden
- Excellent Condition
- Energy rating: D





ABOUT THE HOME

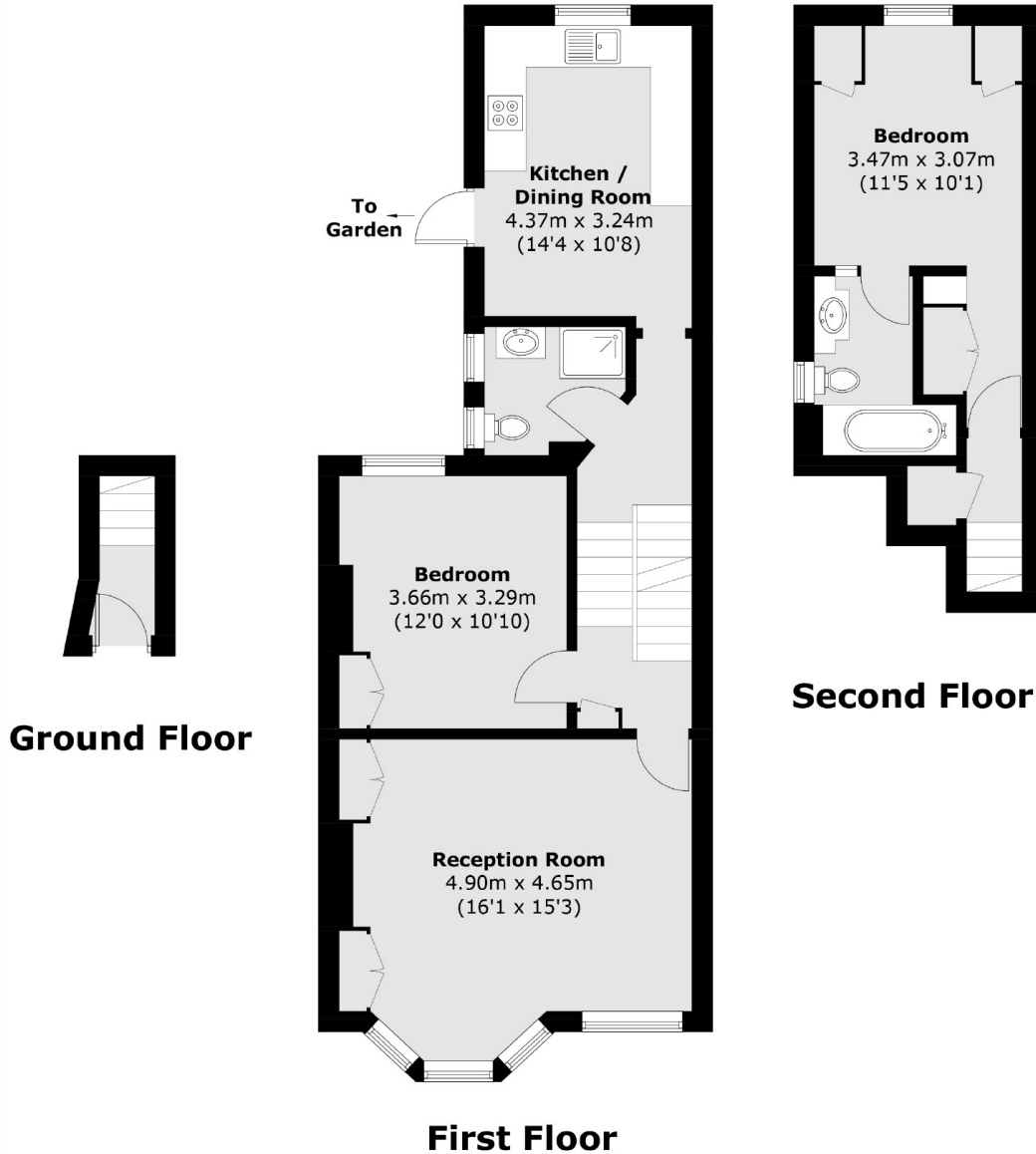
A charming two double bedroom, two bathroom Victorian conversion with a large private garden.

This well presented first and second floor property offers 897.7 Sqft of living space. The first floor accommodation comprises; spacious reception room to the front benefitting from an abundance of natural light, generous double bedroom, modern bathroom and an eat-in kitchen to the rear with access onto a large, South facing private garden. Stairs lead to the second floor where there is a master bedroom with built in storage and a newly renovated en suite bathroom. The property further benefits from the scope to extend into the loft space subject to planning permission.

Earlsfield Road is a sought after and convenient central location being equidistant of Earlsfield, Wandsworth Common and Clapham Junction mainline railway stations, and the array of amenities each of those areas have to offer.







Total area (approx.): 83.4 sq. m (897.7 sq. ft)

JACKSONS EARLSFIELD

372-374 Garratt Lane,
Earlsfield, London, SW18 4ES
Sales: 020 8971 7979
Lettings: 020 8971 7070

Energy Rating: D We aim to make our particulars both accurate and reliable. However they are not guaranteed; nor do they form part of an offer or contract. If you require clarification on any points then please contact us, especially if you're traveling some distance to view. Please note that appliances and heating systems have not been tested and therefore no warranties can be given as to their good working order.