



## ST. GEORGES GROVE, SW17

£550,000

- Excellent Condition
- Allocated Parking
- Modern Apartment
- Spacious Accommodation
- Private Balcony
- Energy rating: B





## ABOUT THE HOME

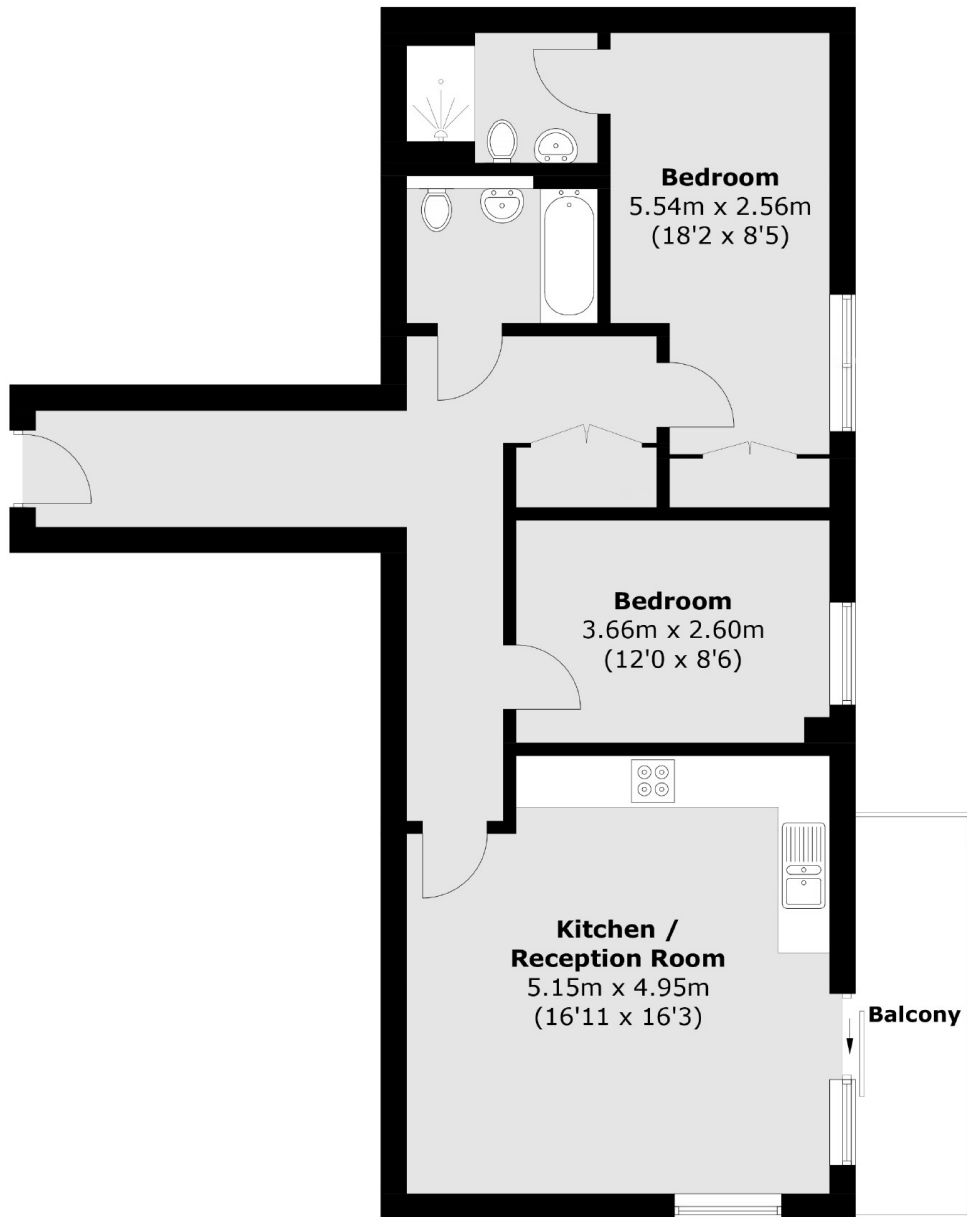
A beautifully presented two double bedroom, two bathroom modern apartment with a generous private balcony.

Accommodation comprises; spacious entrance hall with secure telephone entry system and useful storage cupboards, modern spacious bathroom with a bath, two double bedrooms; the master bedroom offering a modern en-suite bathroom and built in wardrobes, exceptionally generous open plan reception, kitchen and dining room with doors leading out to a large private balcony.

The property is situated in the highly sought after St. George's Grove development formally known as the 'Quadrangle', gives ease of access to both Earlsfield mainline station and Tooting Broadway underground Station (Northern Line). The property also benefits from direct access to the newly developed Springfield Park.







Total area (approx.): 73.1 sq. m (786.8 sq. ft)  
Balcony Area: 6.1 sq. m (65.6 sq. ft)

#### JACKSONS EARLSFIELD

372-374 Garratt Lane,  
Earlsfield, London, SW18 4ES  
Sales: 020 8971 7979  
Lettings: 020 8971 7070

Energy Rating: Appraisal We aim to make our particulars both accurate and reliable. However they are not guaranteed; nor do they form part of an offer or contract. If you require clarification on any points then please contact us, especially if you're traveling some distance to view. Please note that appliances and heating systems have not been tested and therefore no warranties can be given as to their good working order.