



TRANMERE ROAD, SW18

£2,500 PCM

- Newly refurbished
- Maisonette
- Kitchen/Breakfast room
- Reception room
- Two double bedrooms
- Private garden



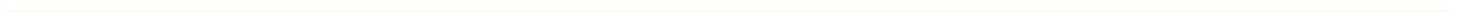
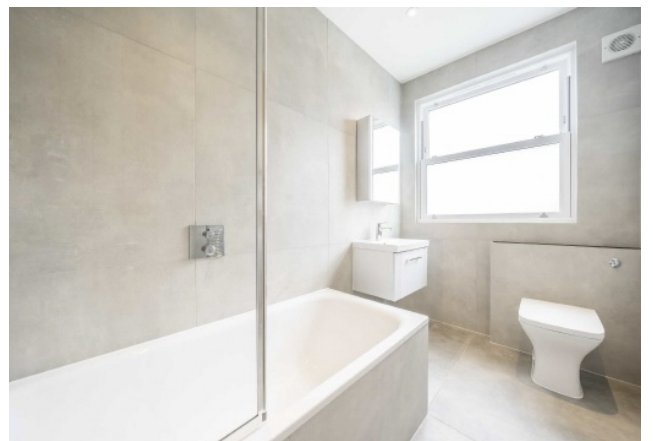


ABOUT THE HOME

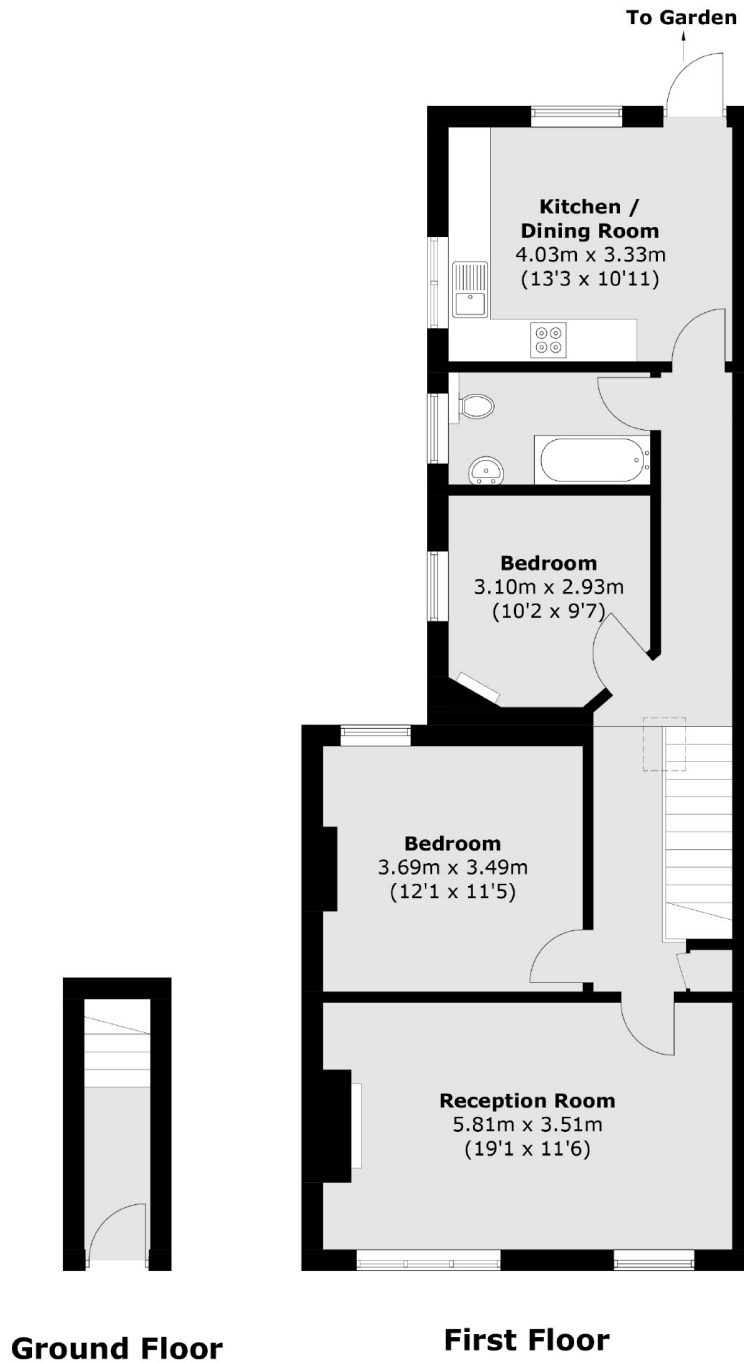
Newly refurbished two double bedroom maisonette with private garden.

Including a large reception room with feature fireplace, impressive kitchen/breakfast room, two double bedroom, modern bathroom and private garden.

Located within a short distance to Earlsfield Station as well as the local amenities of Garratt Lane







Total area (approx.): 80.6 sq. m (867.6 sq. ft)

JACKSONS EARLSFIELD

372-374 Garratt Lane,
Earlsfield, London, SW18 4ES
Sales: 020 8971 7979
Lettings: 020 8971 7070

Energy Rating: We aim to make our particulars both accurate and reliable. However they are not guaranteed; nor do they form part of an offer or contract. If you require clarification on any points then please contact us, especially if you're traveling some distance to view. Please note that appliances and heating systems have not been tested and therefore no warranties can be given as to their good working order.