



BURNTWOOD LANE, SW17

£1,350,000

- Four Double Bedrooms
- Victorian Family Home
- Excellent Condition
- Sought After Location
- Two Bathrooms
- Energy rating: D





ABOUT THE HOME

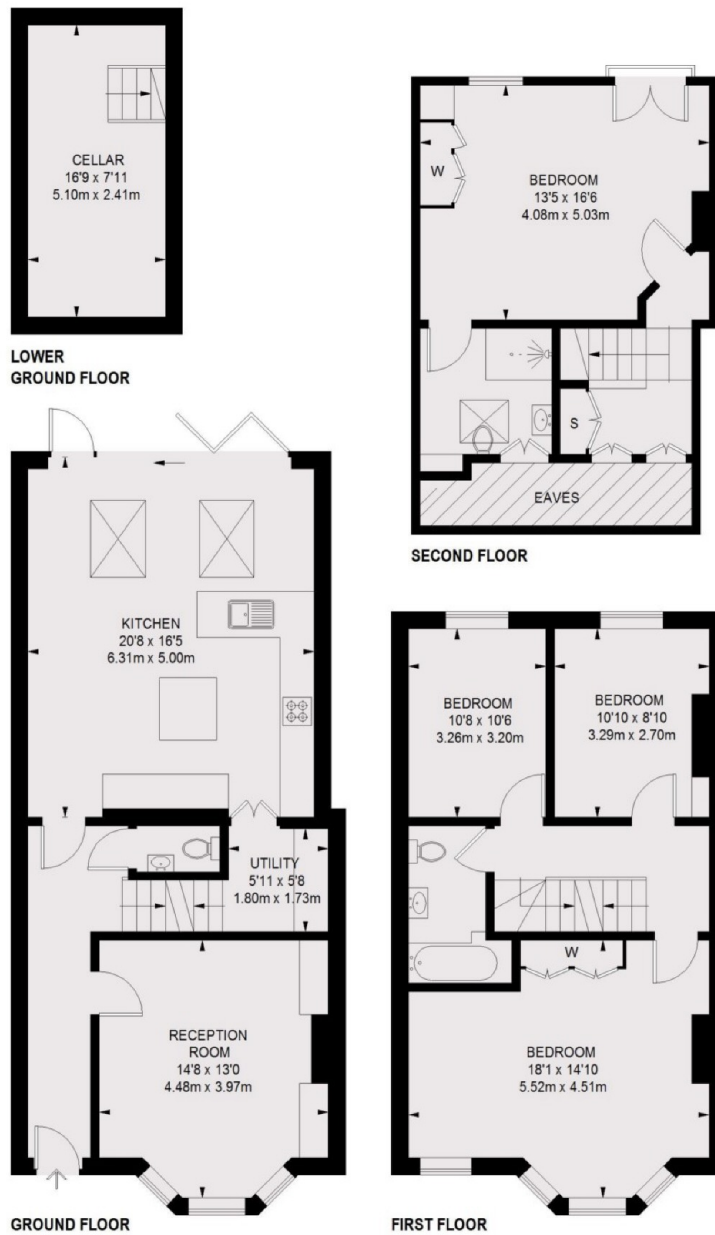
A charming four bedroom mid terrace Victorian house which has been completely renovated by the current owners to a high standard.

The property has been extended into the loft creating a great family home retains a wealth of original period features. Accommodation comprises; entrance hall with W/C, elegant reception room, fantastic open plan kitchen/dining room with bi-fold doors leading to a low maintenance rear garden, useful utility room with stairs leading down to a basement offering a wonderful entertaining space, four double bedrooms; the master bedroom benefiting from an impressive en suite bathroom, and modern family bathroom on the first floor. Every room benefits from high ceilings, an abundance of light and from being tastefully decorated throughout.

The property is situated on a sought after residential road offering easy access to Earlsfield mainline railway station, Tooting Broadway underground station and Garratt Lane's array of amenities. The green open spaces of Garratt Green and Wandsworth Common are also close by.







TOTAL APPROX. FLOOR AREA (EXCLUDING EAVES)
1704 SQ. FT. (158.27 SQ. M.)

JACKSONS EARLSFIELD

372-374 Garratt Lane,
Earlsfield, London, SW18 4ES
Sales: 020 8971 7979
Lettings: 020 8971 7070

Energy Rating: We aim to make our particulars both accurate and reliable. However they are not guaranteed; nor do they form part of an offer or contract. If you require clarification on any points then please contact us, especially if you're traveling some distance to view. Please note that appliances and heating systems have not been tested and therefore no warranties can be given as to their good working order.