



Summerley Street, SW18

£625,000

A charming two bedroom first floor Victorian property. This property has the scope to extend into the loft space.

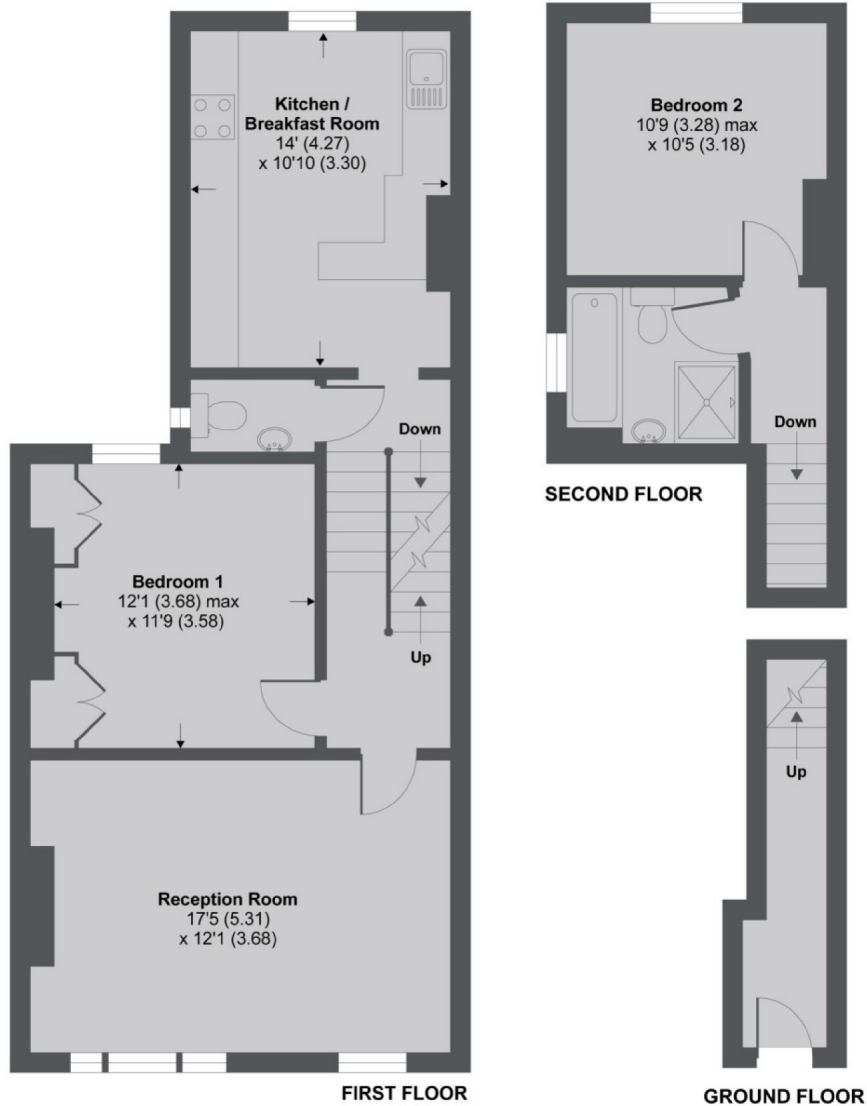
- Victorian Maisonette
- Two Double Bedrooms
- Scope to Extend
- Sought After Location
- Chain Free
- Close to Station



The property comprises of; own front door leading to an entrance hall, stairs lead to a well presented eat-in kitchen and first floor WC, to the front of the property is a spacious, full length reception room with space for a dining area which benefits from an abundance of natural light, behind this is a generous double bedroom offering ample built in storage, stairs lead to the second floor where you'll find a family bathroom with separate bath and shower and a second double bedroom. The property has the scope to extend further into the loft space.

Located in one of Earlsfield's most prestigious roads and within easy reach of the mainline railway station and Garratt Lane's array of amenities.





APPROX. GROSS INTERNAL FLOOR AREA 875 SQ FT 81.2 SQ METRES

Copyright nichecom.co.uk 2019 REF : 547373

Jacksons Earlsfield
372-374 Garratt Lane
Earlsfield
London
SW18 4ES
020 8971 7979

Energy Rating: We aim to make our particulars both accurate and reliable. However they are not guaranteed; nor do they form part of an offer or contract. If you require clarification on any points then please contact us, especially if you're traveling some distance to view. Please note that appliances and heating systems have not been tested and therefore no warranties can be given as to their good working order.