



EARLSFIELD ROAD, SW18

£325,000

- First Floor Flat
- Communal Garden
- Sought After Location
- Ideal First Time Purchase
- Chain Free
- Energy rating: C





ABOUT THE HOME

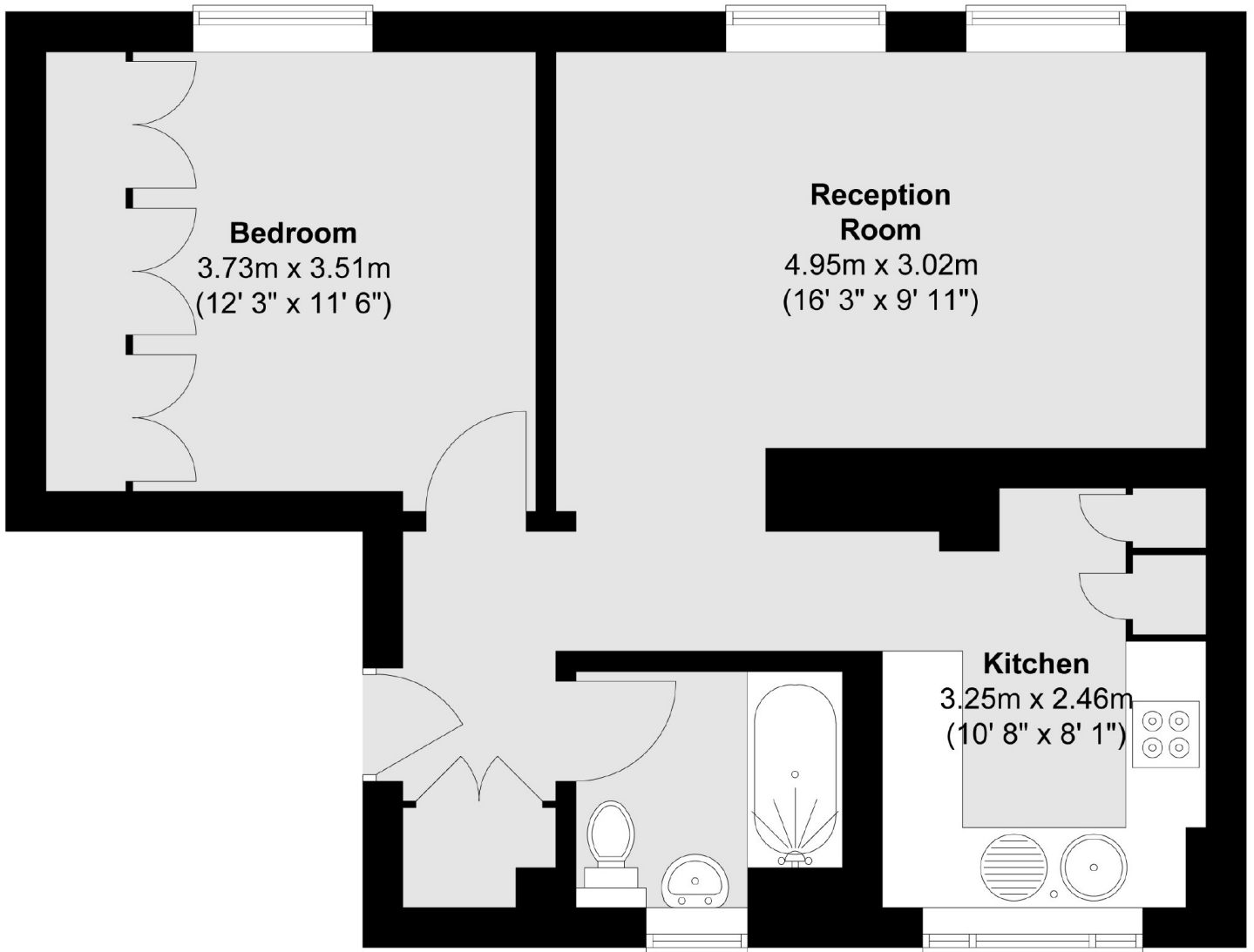
A well presented and spacious one double bedroom purpose built flat, located on a sought after road in Earlsfield. In our opinion an ideal first time or investment purchase.

Accommodation comprises; hallway with very useful storage cupboards, generous reception room with dining area offering a great entertaining space, refitted modern kitchen, large double bedroom and bathroom. The property also benefits from off street residents parking spaces.

The property is situated on the sought after Earlsfield Road. Wandsworth Town and Earlsfield are the nearest railway stations. Wandsworth Common and Southside shopping centre are close at hand.







Total area (approx.) : 49.2 sq. m (530 sq. ft)

JACKSONS EARLSFIELD

372-374 Garratt Lane,
Earlsfield, London, SW18 4ES
Sales: 020 8971 7979
Lettings: 020 8971 7070

Energy Rating: We aim to make our particulars both accurate and reliable. However they are not guaranteed; nor do they form part of an offer or contract. If you require clarification on any points then please contact us, especially if you're traveling some distance to view. Please note that appliances and heating systems have not been tested and therefore no warranties can be given as to their good working order.