



Knaresborough Drive, SW18

£750,000

A beautiful two bedroom, two bathroom modern apartment situated on the top floor, offering generous and luxurious accommodation with direct views over King George's Park.

- Luxurious Modern Apartment
- Two Bedrooms
- Two Bathrooms
- Allocated Underground Parking
- Two Balconies
- Sought After Location

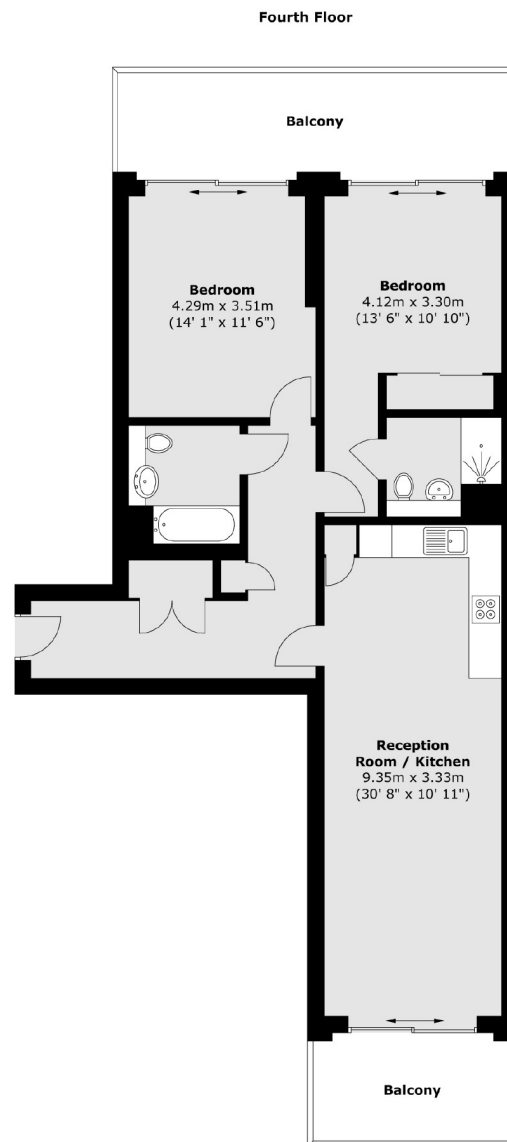


The property is being sold with allocated underground parking, benefits from uninterrupted views over King George's park, and access to well maintained communal gardens. Accommodation comprises; spacious hallway with useful large storage cupboard, wonderfully presented kitchen open plan to the impressive reception and dining area with doors opening onto a generous balcony, great family bathroom, generous second bedroom, spacious main bedroom benefiting from built in wardrobes and a lovely en suite bathroom. Both bedrooms offer access onto a second large balcony.

This highly sought after development is located on Knaresborough Drive and sits close to central Earlsfield with excellent local amenities including shops, bars, restaurants and excellent transport links. The green open spaces of King George's Park (which includes a Nuffield Health Gym, tennis courts and a lake) are literally steps from the property.







Total area (approx.) : 88.4 sq. m (952 sq. ft)
Total balcony area (approx.) : 20.8 sq. m (224 sq. ft)

Jacksons Earlsfield
372-374 Garratt Lane
Earlsfield
London
SW18 4ES
020 8971 7979

Energy Rating: We aim to make our particulars both accurate and reliable. However they are not guaranteed; nor do they form part of an offer or contract. If you require clarification on any points then please contact us, especially if you're traveling some distance to view. Please note that appliances and heating systems have not been tested and therefore no warranties can be given as to their good working order.