



Aboyne Road, SW17

£425,000

A charming one bedroom, ground floor modern apartment with a private rear garden.

- Modern Apartment
- One Bedroom
- Private Garden
- Ground Floor
- Excellent Condition
- Sought After Location

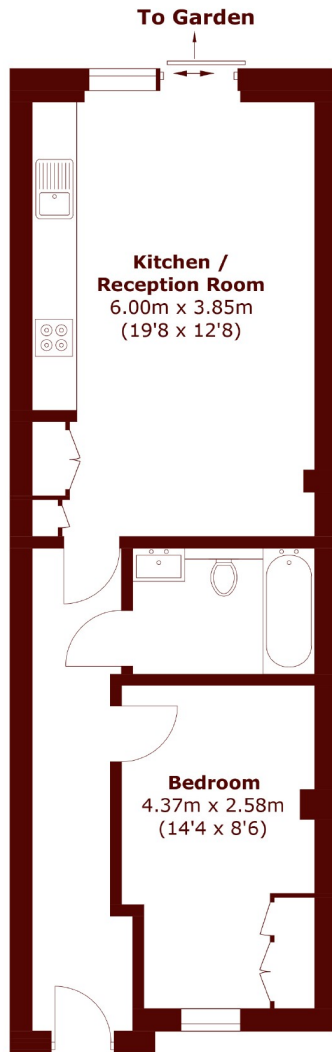


Accommodation comprises; own front door, wide entrance hallway, well presented bedroom with fitted wardrobes, modern bathroom, spacious open plan kitchen and reception room with sliding doors leading to a private low maintenance garden.

Aboyne Road is located within close proximity to Earlsfield mainline railway station, Tooting Broadway underground station and Garratt Lane's array of amenities. The green open spaces of Wandsworth Common are also close by.







Ground Floor

Total area (approx.): 47.6 sq. m (512.4 sq. ft)

Jacksons Earlsfield
372-374 Garratt Lane
Earlsfield
London
SW18 4ES
020 8971 7979

Energy Rating: B We aim to make our particulars both accurate and reliable. However they are not guaranteed; nor do they form part of an offer or contract. If you require clarification on any points then please contact us, especially if you're traveling some distance to view. Please note that appliances and heating systems have not been tested and therefore no warranties can be given as to their good working order.