



TWILLEY STREET, SW18

£475,000

- One Bedroom
- Good Condition
- Ground Floor
- Private Garden
- Sought After Location
- Energy rating: D





ABOUT THE HOME

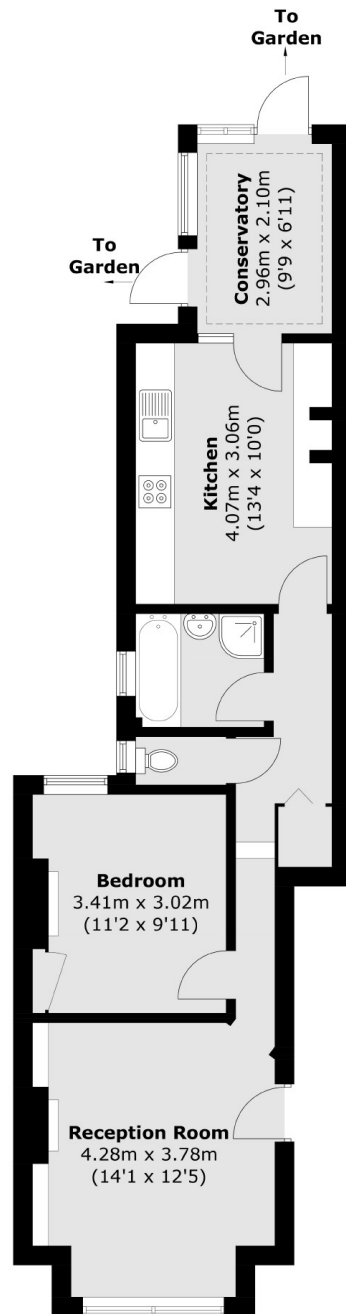
A charming ground floor period conversion flat offering a large low maintenance garden.

Accommodation comprises; a well presented double bedroom with sizable built in wardrobe, spacious reception room, generous bathroom with a bath and shower and a separate W/C, large kitchen with ample storage space and a bright conservatory/dining room leading onto low maintenance and well presented rear garden. The property is situated on the ground floor of a former terraced house with stunning period features.

Twilley Street is a residential road of similar period buildings, which are consistently sought after being equidistant from Earlsfield and Wandsworth Town. This location is very well served by excellent transport links especially with Southfields tube station being within close proximity. Great restaurants, bars, leisure and shopping facilities are all also close by.







Total area (approx.): 58.1 sq. m (625.4 sq. ft)

JACKSONS EARLSFIELD

372-374 Garratt Lane,
Earlsfield, London, SW18 4ES
Sales: 020 8971 7979
Lettings: 020 8971 7070

Energy Rating: We aim to make our particulars both accurate and reliable. However they are not guaranteed; nor do they form part of an offer or contract. If you require clarification on any points then please contact us, especially if you're traveling some distance to view. Please note that appliances and heating systems have not been tested and therefore no warranties can be given as to their good working order.