



WEST BARNES LANE, KT3

£2,000 PCM

- Two Bedrooms
- One Bathroom
- Private Garden
- Separate Kitchen
- Garden
- EPC Rating D





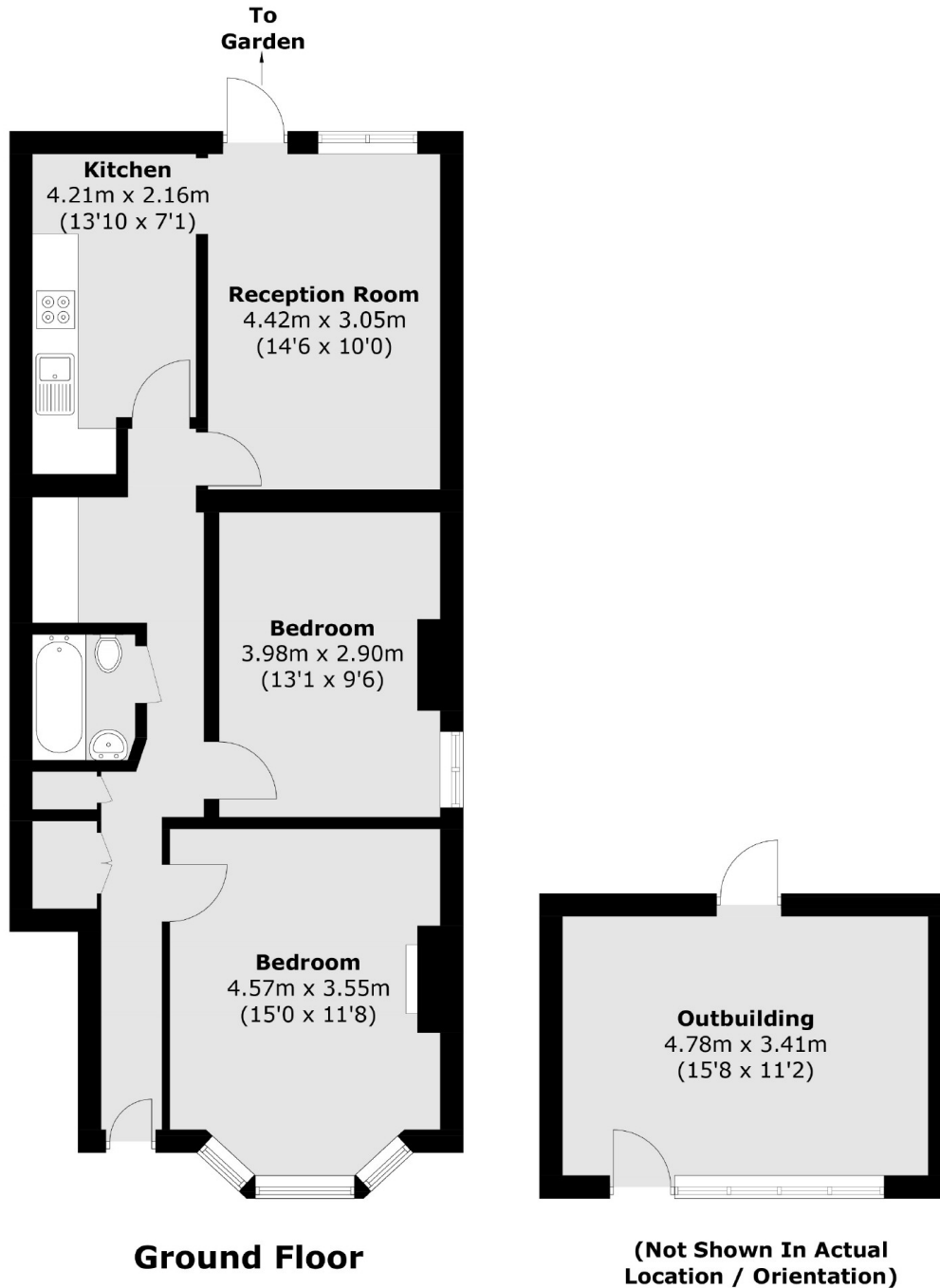
ABOUT THE HOME

A spacious ground floor garden flat ideally located within close proximity to Raynes Park and Motspur Park train stations. Comprising two double bedroom, one bathroom, private garden complete with an annexe. Suitable for couple, sharers and families alike.

Located within close proximity to both Raynes Park and Motspur Park train station.







Total area (approx.): 67.3 sq. m (724.4 sq. ft)
Outbuilding area (approx.): 16.6 sq. m (178.6 sq. ft)

JACKSONS EARLSFIELD

372-374 Garratt Lane,
Earlsfield, London, SW18 4ES
Sales: 020 8971 7979
Lettings: 020 8971 7070

Energy Rating: We aim to make our particulars both accurate and reliable. However they are not guaranteed; nor do they form part of an offer or contract. If you require clarification on any points then please contact us, especially if you're traveling some distance to view. Please note that appliances and heating systems have not been tested and therefore no warranties can be given as to their good working order.