



## West Barnes Lane, KT3

£2,075 PCM

A spacious ground floor garden flat ideally located within close proximity to Raynes Park and Motspur Park train stations. Comprising two double bedroom, one bathroom, private garden complete with an annexe. Suitable

- Two Bedrooms
- One Bathroom
- Private Garden
- Separate Kitchen

For further information on the costs associated with renting a property, please pop into our office or visit our website.



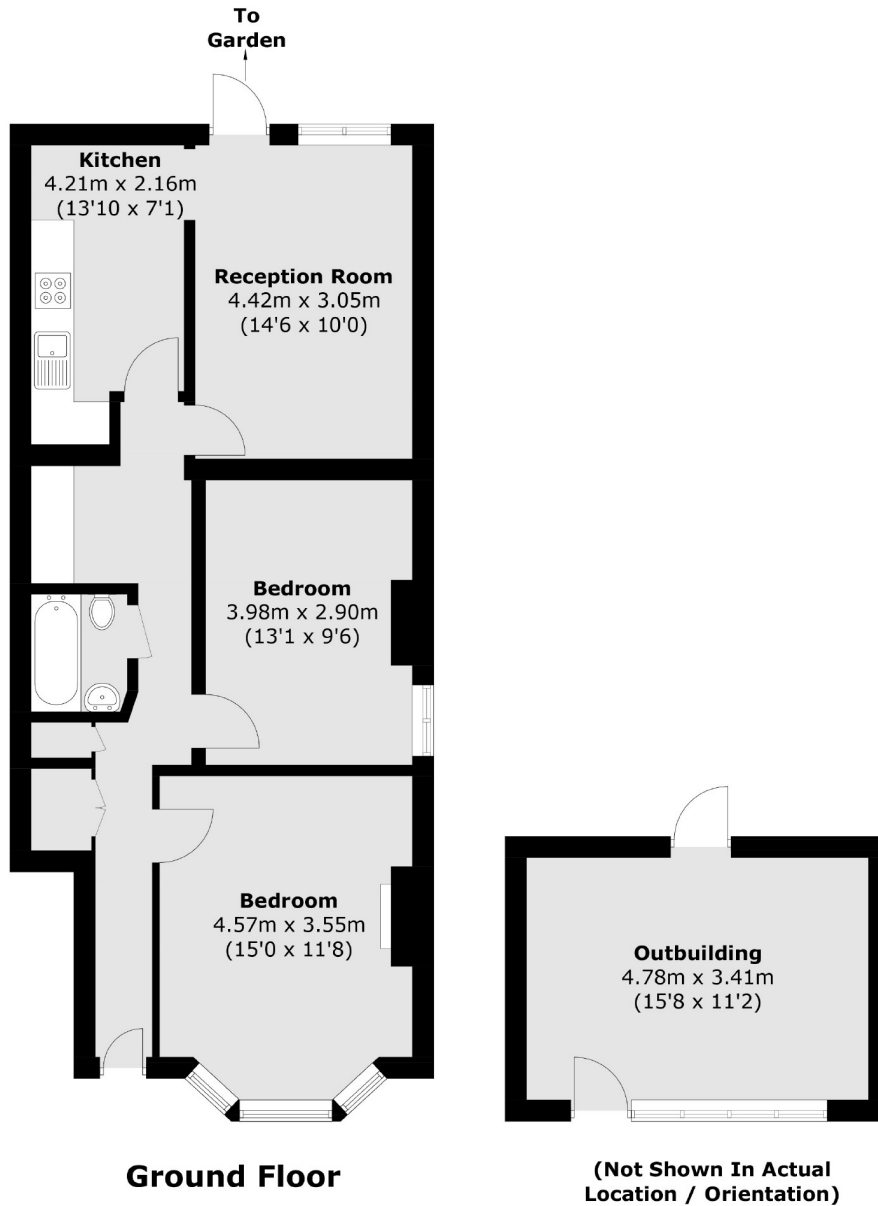


Located within close proximity to both Raynes Park and Motspur Park train station.









Total area (approx.): 67.3 sq. m (724.4 sq. ft)  
Outbuilding area (approx.): 16.6 sq. m (178.6 sq. ft)

Jacksons Earlsfield  
372-374 Garratt Lane  
Earlsfield  
London  
SW18 4ES  
020 8971 7070

Energy Rating: We aim to make our particulars both accurate and reliable. However they are not guaranteed; nor do they form part of an offer or contract. If you require clarification on any points then please contact us, especially if you're traveling some distance to view. Please note that appliances and heating systems have not been tested and therefore no warranties can be given as to their good working order.