



Cleeve Way, SW15

£350,000

A two double bedroom, first floor, purpose built flat in good condition throughout.

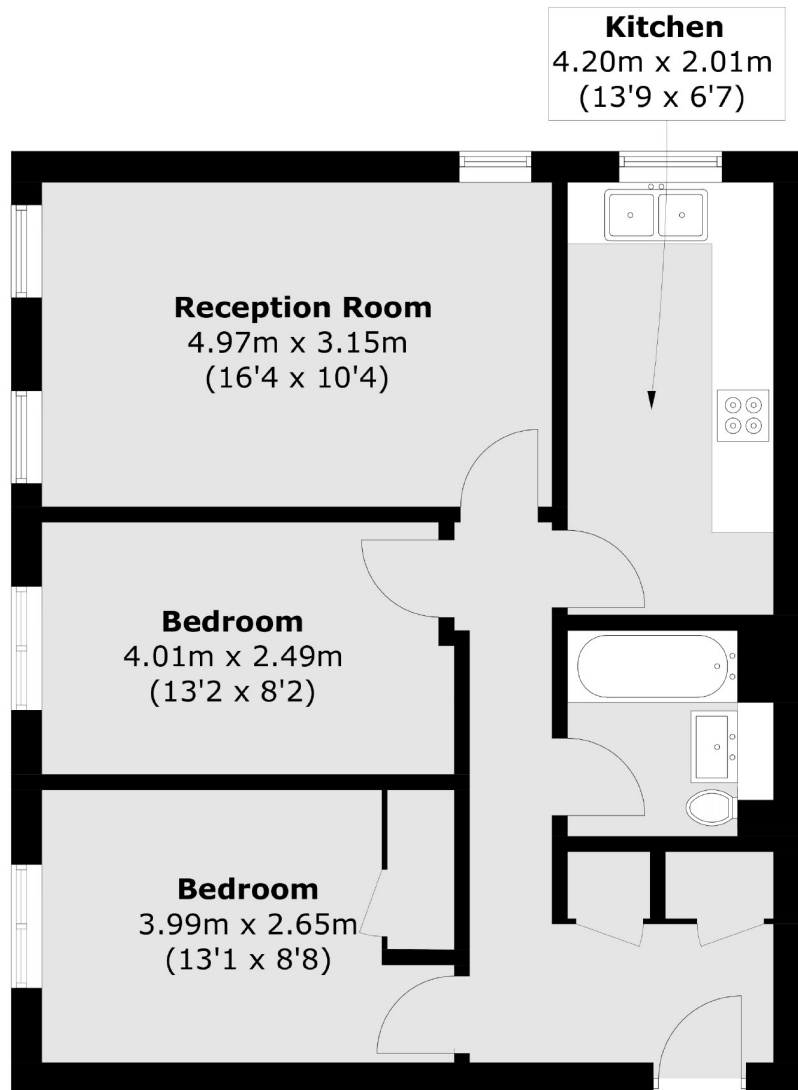
- Two Double Bedrooms
- Separate Lounge/Kitchen
- Good Condition
- Chain Free
- Communal Garden
- Allocated Parking Space



In good condition throughout this property comprises of a bright reception room, generous master bedroom, second double bedroom, eat-in kitchen, bathroom, communal garden and an allocated parking space.

It has quick access to the A3 for routes out of London as well as being in easy reach of Barnes Station (National Rail) with lines to Waterloo and London Victoria. Richmond Park is also close buy as well as a multitude of amenities on Danebury Avenue.





Total area (approx.): 60.8 sq. m (654.4 sq. ft)

Jacksons Earlsfield
372-374 Garratt Lane
Earlsfield
London
SW18 4ES
020 8971 7979

Energy Rating: We aim to make our particulars both accurate and reliable. However they are not guaranteed; nor do they form part of an offer or contract. If you require clarification on any points then please contact us, especially if you're traveling some distance to view. Please note that appliances and heating systems have not been tested and therefore no warranties can be given as to their good working order.