



St. Georges Grove, SW17

£525,000

A modern built two bedroom, two bathroom, penthouse apartment with a large terrace and secure private parking.

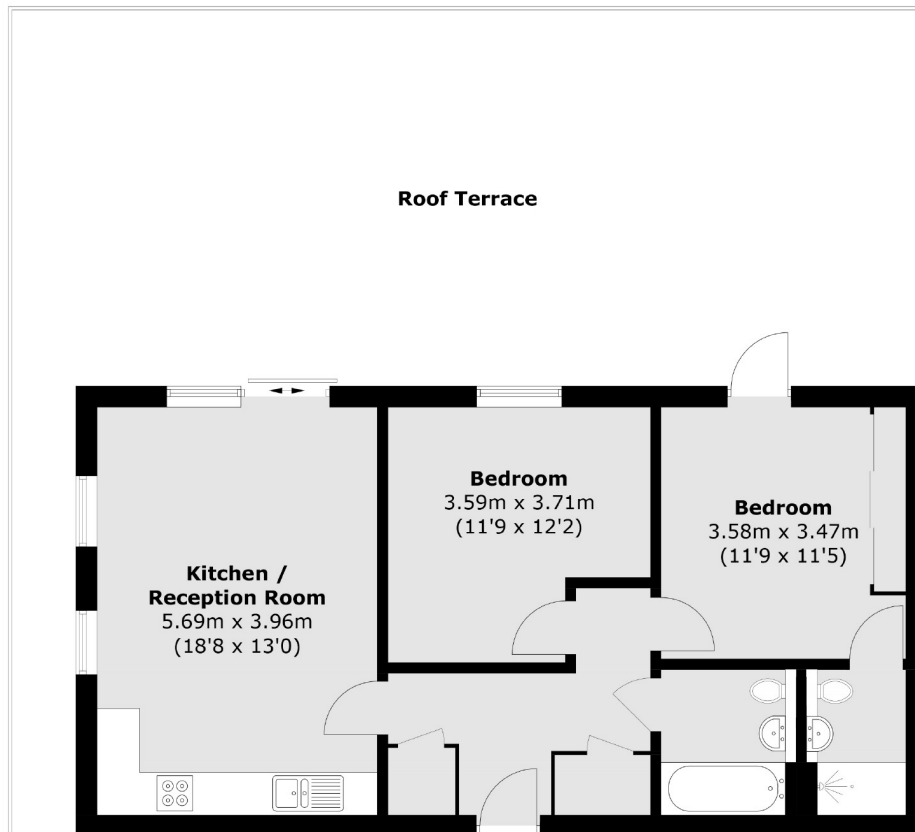
- Modern Apartment
- Two Bedrooms
- Two Bathrooms
- Allocated Parking
- Large Private Roof Terrace
- Chain Free



Accommodation comprises: an entrance hall with spacious bathroom, two generous bedrooms, the master bedroom benefiting from an modern en-suite bathroom, kitchen open plan to a reception/dining room with doors leading out to a large private terrace.

St Georges Grove is located within close proximity to Earlsfield Station as well as the popular bars and restaurants of Garratt Lane. Further benefits of the development include onsite shopping facilities, allocated parking & bus links into Clapham Junction





Total area (approx.): 66.0 sq. m (710.4 sq. ft)
Roof Terrace: 73.8 sq. m (794.4 sq. ft)

Jacksons Earlsfield
372-374 Garratt Lane
Earlsfield
London
SW18 4ES
020 8971 7979

Energy Rating: We aim to make our particulars both accurate and reliable. However they are not guaranteed; nor do they form part of an offer or contract. If you require clarification on any points then please contact us, especially if you're traveling some distance to view. Please note that appliances and heating systems have not been tested and therefore no warranties can be given as to their good working order.