



## Franch Court Road, SW17

£950,000

A charming two bedroom Victorian family home with a large private garden and scope to extend to the rear and into the loft.

- Two Bedrooms
- Victorian Family Home
- Excellent Condition
- Large Garden
- Chain Free
- Scope to Extend





The property benefits from an abundance of light and retains a wealth of original period features throughout. Accommodation comprises; open plan double reception room, generous kitchen/dining room offering a great entertaining space with doors that lead onto a large rear garden. On the first floor there are two double bedrooms, and a modern family bathroom with separate bath and shower. The property has the scope to extend to the rear and into the loft.

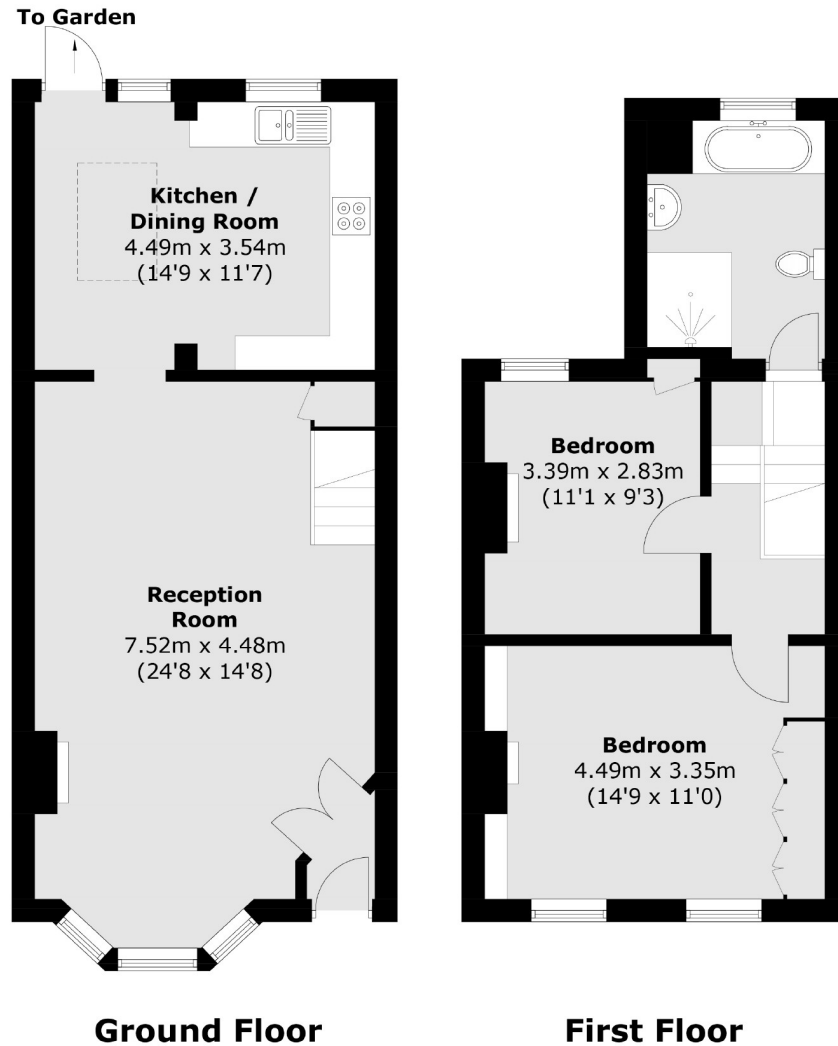
The property is situated on a sought-after, quiet residential road offering easy access to Earlsfield mainline railway station, Tooting Broadway underground station and Garratt Lane's array of amenities. The green open spaces of Springfield park & Wandsworth Common are also close by.











Total area (approx.): 87.8 sq. m (945.0 sq. ft)

Jacksons Earlsfield  
372-374 Garratt Lane  
Earlsfield  
London  
SW18 4ES  
020 8971 7979

Energy Rating: We aim to make our particulars both accurate and reliable. However they are not guaranteed; nor do they form part of an offer or contract. If you require clarification on any points then please contact us, especially if you're traveling some distance to view. Please note that appliances and heating systems have not been tested and therefore no warranties can be given as to their good working order.