



Keble Street, SW17

£900,000

A Victorian house with an impressive open plan kitchen/dining room and separate reception room. The property also benefits from a large, secluded garden.

- Victorian Family Home
- Three Double Bedrooms
- Open Plan Kitchen/Dining
- Large Garden
- Excellent Condition
- Sought-after Location

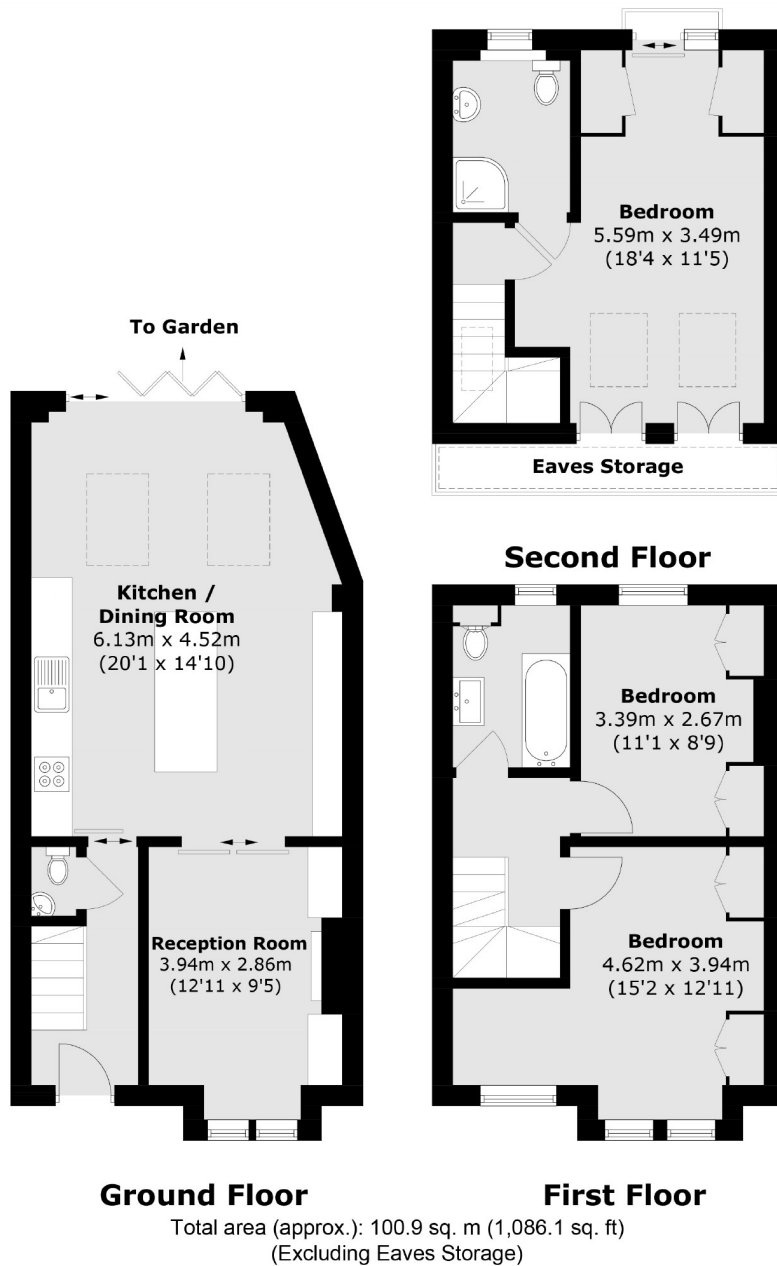


Accommodation comprises; an entrance hall with a downstairs W/C, well finished reception room, a large modern kitchen open plan to a dining area. This offers a wonderful entertaining space by having bi-fold doors that lead onto a large rear garden with a storage shed. On the first floor there are two well-proportioned bedrooms and a main bathroom. Stairs lead to the second floor where you will find a fantastic master bedroom with ample storage space, Juliet balcony and a well presented en suite bathroom. The property has been decorated to a high standard throughout whilst retaining many period features and has been tastefully extended at the rear and into the loft to create a fantastic family home.

This property is situated in a highly desirable residential street with easy access to both Earlsfield mainline railway station and Tooting Broadway underground. A plethora of restaurants, bars, leisure and shopping facilities are within walking distance.







Jacksons Earlsfield
372-374 Garratt Lane
Earlsfield
London
SW18 4ES
020 8971 7979

Energy Rating: We aim to make our particulars both accurate and reliable. However they are not guaranteed; nor do they form part of an offer or contract. If you require clarification on any points then please contact us, especially if you're traveling some distance to view. Please note that appliances and heating systems have not been tested and therefore no warranties can be given as to their good working order.