



Atheldene Road, SW18

£575,000

A three bedroom charming Edwardian maisonette with generous private garden.

- Three Bedrooms
- First Floor
- Large Garden
- Edwardian Maisonette
- Scope for Further Improvement
- Sought After Location



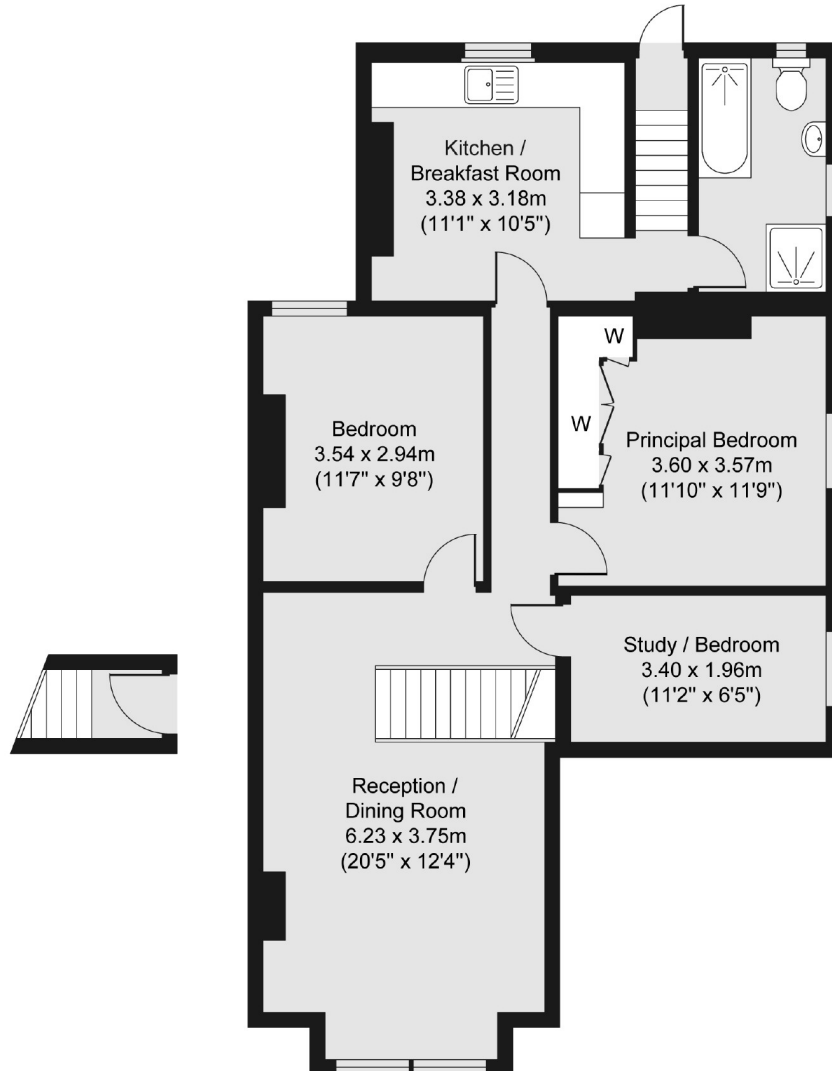
Accommodation comprises; own front door with stairs leading to the first floor landing, spacious reception room open plan to the dining area; offering a great entertaining space, modern eat-in kitchen, family bathroom, three generous bedrooms and an impressively large rear garden. The property also benefits from the scope to further improve and modernise.

Located on a much sought after road in Earlsfield, the property is well placed for some of the most desirable schools in the area and is 0.4 miles from Earlsfield mainline station. Garratt Lane with its vast array of shops, bars and restaurants is within easy reach. The green open spaces of Wandsworth Common and local parks are also close by.



Ground Floor

First Floor



Total area (approx.) 79.75 sq. m (858 sq. ft)

Jacksons Earlsfield
372-374 Garratt Lane
Earlsfield
London
SW18 4ES
020 8971 7979

Energy Rating: We aim to make our particulars both accurate and reliable. However they are not guaranteed; nor do they form part of an offer or contract. If you require clarification on any points then please contact us, especially if you're traveling some distance to view. Please note that appliances and heating systems have not been tested and therefore no warranties can be given as to their good working order.