



## Ravensbury Road, SW18

£475,000

A wonderful ground floor Edwardian maisonette with separate reception room, eat-in kitchen and private garden.

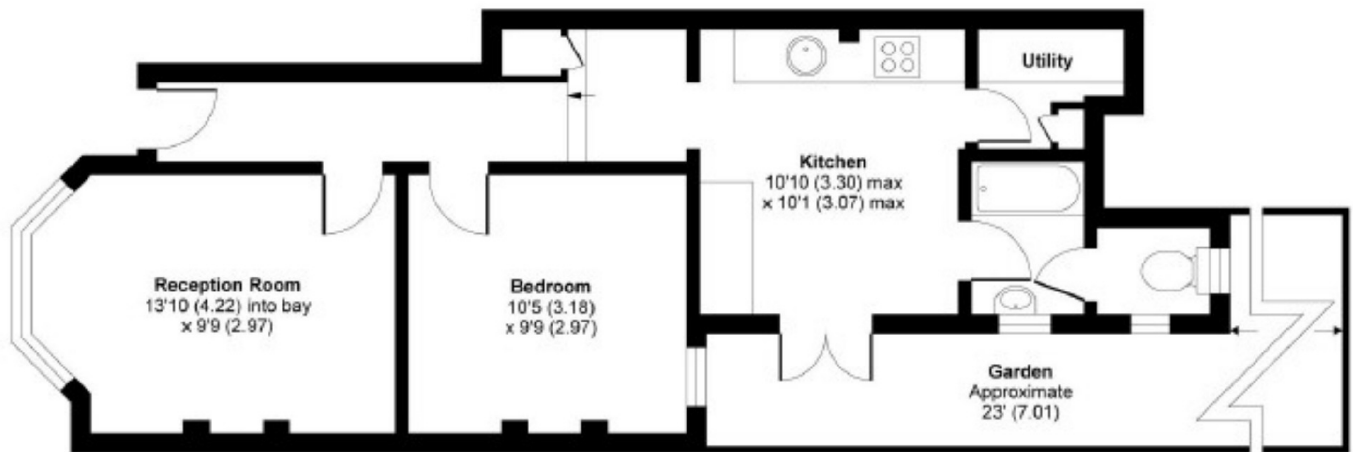
- One Double Bedroom
- Ground Floor
- Edwardian Maisonette
- Separate Kitchen
- Good Condition
- Sought After Location



Accommodation consists of; its own entrance, hallway with useful storage cupboard, spacious reception room, well-presented double bedroom, kitchen breakfast room with access to a low maintenance private garden, modern family bathroom and separate W/C. The property is located on one of the most popular roads in Earlsfield,

Ravensbury Road gives ease of access to both Earlsfield mainline station, Southfields and Wimbledon Park underground stations (District line). King George Park is a short walk away.





GROUND FLOOR

APPROX. GROSS INTERNAL FLOOR AREA 497 SQ FT 46.1 SQ METRES

Ravensbury Road, Earlsfield, SW18

Copyright nichecom.co.uk 2016 Produced for Jacksons the Independent Estate Agents REF : 82270

Jacksons Earlsfield  
372-374 Garratt Lane  
Earlsfield  
London  
SW18 4ES  
020 8971 7979

Energy Rating: We aim to make our particulars both accurate and reliable. However they are not guaranteed; nor do they form part of an offer or contract. If you require clarification on any points then please contact us, especially if you're traveling some distance to view. Please note that appliances and heating systems have not been tested and therefore no warranties can be given as to their good working order.