



BALHAM HIGH ROAD, SW17

£650,000

- Two Bedrooms
- Open Plan Reception Room
- Private Balcony
- Modern Finish Throughout
- Central Balham Location
- Energy Rating : B





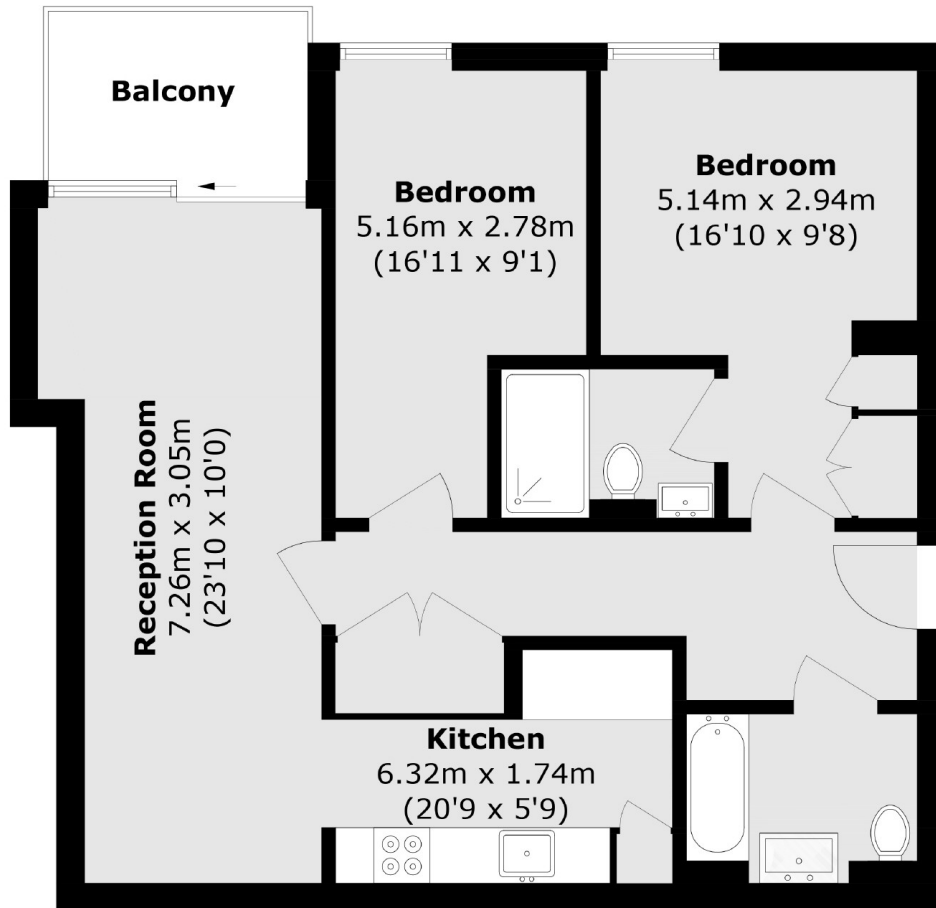
ABOUT THE HOME

A beautifully presented two bedroom apartment located in the heart of Balham. This property offers a modern open plan kitchen / reception room with access to a private balcony.

Situated in the heart of Balham, this development is perfectly placed for easy access to both Balham and Tooting Bec stations offering excellent transport links into the city. The many restaurants, bars and shops that both Balham and Tooting have to offer are right on your doorstep. The green spaces of Tooting Common are also only a short walk away.







Total area (approx.): 75.8 sq. m (815.9 sq. ft)

Balcony area (approx.): 5.1 sq. m (54.9 sq. ft)

JACKSONS BALHAM

8-11 Balham Station Road,
London, SW12 9SG
Sales: 020 8675 6555
Lettings: 020 8675 6565

Energy Rating: We aim to make our particulars both accurate and reliable. However they are not guaranteed; nor do they form part of an offer or contract. If you require clarification on any points then please contact us, especially if you're traveling some distance to view. Please note that appliances and heating systems have not been tested and therefore no warranties can be given as to their good working order.