



BURNBURY ROAD, SW12

£2,750 PCM

- Ground floor flat
- Spacious reception room
- Kitchen dining room
- Two double bedrooms
- Private garden
- Energy rating: D



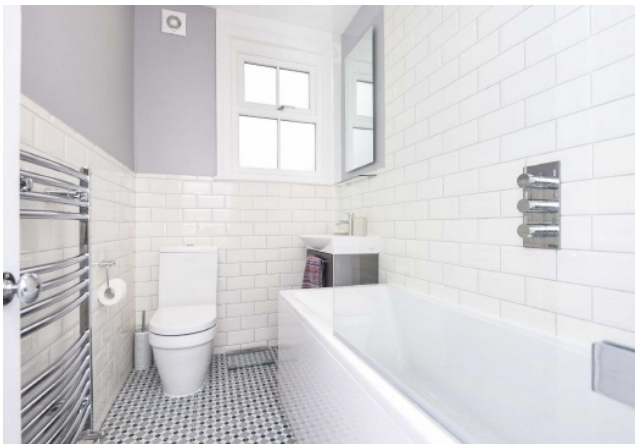




## ABOUT THE HOME

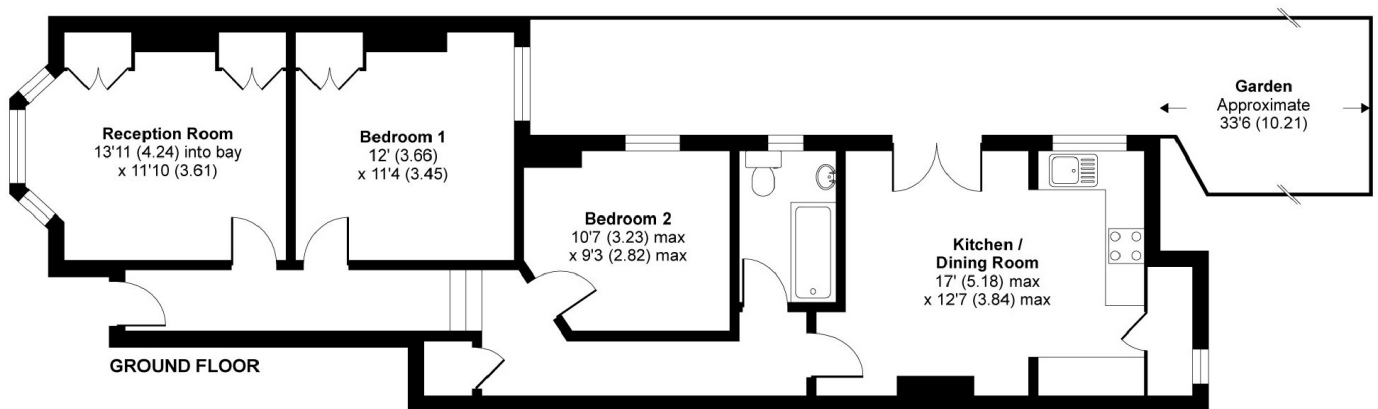
A stunning two double bedroom apartment in the heart of the Boundaries triangle. This property is finished to a high standard throughout, a private garden and comes part furnished.

Located in the highly regarded area of the Hyde Farm this fantastic flat has easy access to Balham and all of the amenities on offer including the shops, restaurants and local bars, as well as Balham mainline and Underground stations allowing for excellent transport links into the city.









APPROX. GROSS INTERNAL FLOOR AREA 805 SQ FT 74.7 SQ METRES

**Burnbury Road, London, SW12**

Copyright nichecom.co.uk 2016 Produced for Jacksons the Independent Estate Agents REF : 89847

### **JACKSONS BALHAM**

8-11 Balham Station Road,  
London, SW12 9SG  
Sales: 020 8675 6555  
Lettings: 020 8675 6565

Energy Rating: D We aim to make our particulars both accurate and reliable. However they are not guaranteed; nor do they form part of an offer or contract. If you require clarification on any points then please contact us, especially if you're traveling some distance to view. Please note that appliances and heating systems have not been tested and therefore no warranties can be given as to their good working order.