



BALHAM HIGH ROAD, SW17

£2,300 PCM

- First floor flat
- Reception room
- 883 Sq Ft
- Two double bedrooms
- Close to Balham Stations
- Energy rating: E



2



1



1

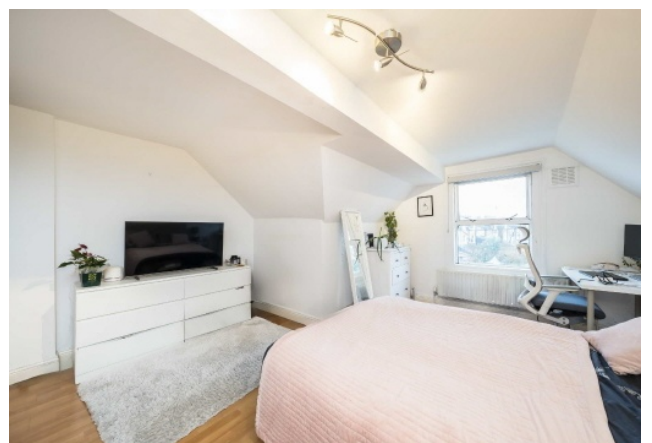




## ABOUT THE HOME

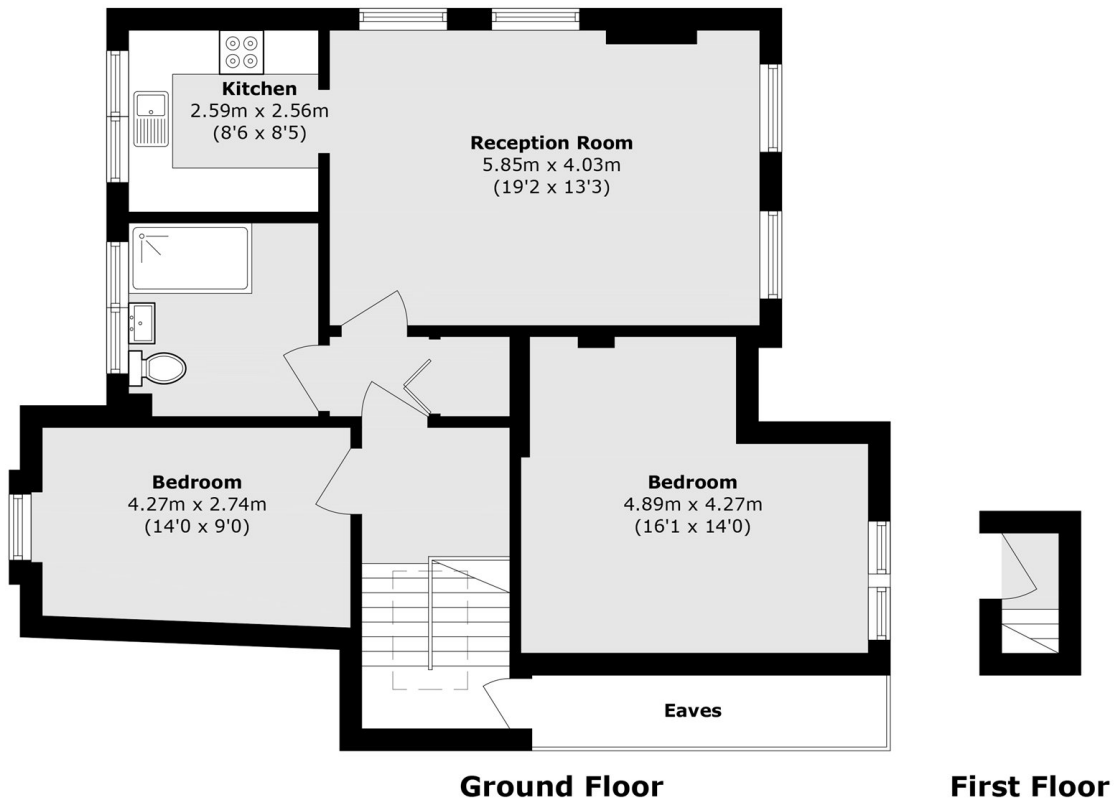
A large two double bedroom apartment perfectly located on Balham High Street. This property is ideal for sharers with two equally sized bedrooms, large reception room and separate kitchen.

Located along Balham High Road this property is ideally located equidistant to Tooting Bec and Balham stations and an array of shops and local restaurants the areas has to offer.









Total area (approx.): 82.2 sq. m (884.8 sq. ft)  
(Excluding Eaves)

### JACKSONS BALHAM

8-11 Balham Station Road,  
London, SW12 9SG  
Sales: 020 8675 6555  
Lettings: 020 8675 6565

Energy Rating: E We aim to make our particulars both accurate and reliable. However they are not guaranteed; nor do they form part of an offer or contract. If you require clarification on any points then please contact us, especially if you're traveling some distance to view. Please note that appliances and heating systems have not been tested and therefore no warranties can be given as to their good working order.