



BALHAM HIGH ROAD, SW17

£3,500 PCM

- First floor flat
- Bright reception room
- Three double bedrooms
- High specification throughout
- Walk-In shower
- Energy rating: C





## ABOUT THE HOME

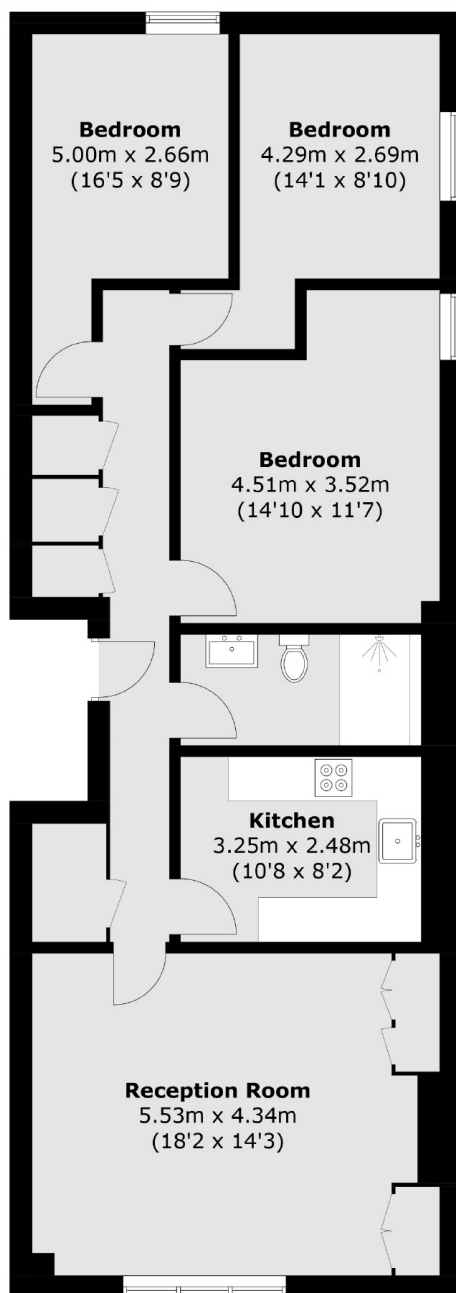
A stunning three bedroom flat that has been re-decorated to a high standard, offering a separate kitchen, three generous double bedrooms and ample storage space. The property would be ideal for professional sharers or a couple.

Located on Balham High Road, opposite Tooting Bec tube station. This property is in an incredible position for easy access to all of the shops, bars and restaurants of Balham and Tooting Bec.









Total area (approx.): 89.0 sq. m (958.0 sq. ft)

#### JACKSONS BALHAM

8-11 Balham Station Road,  
London, SW12 9SG  
Sales: 020 8675 6555  
Lettings: 020 8675 6565

Energy Rating: We aim to make our particulars both accurate and reliable. However they are not guaranteed; nor do they form part of an offer or contract. If you require clarification on any points then please contact us, especially if you're traveling some distance to view. Please note that appliances and heating systems have not been tested and therefore no warranties can be given as to their good working order.