



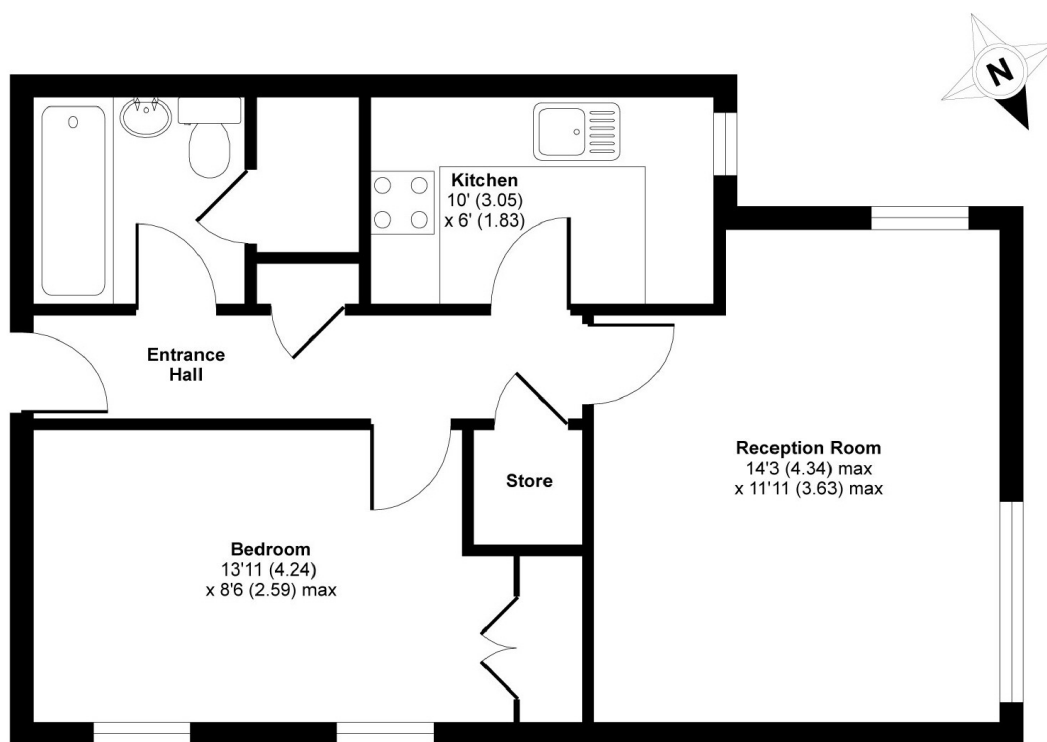
## Hanson Close, SW12

**£1,400 PCM**

Located in a quiet residential area, a one bedroom purpose built apartment overlooking the communal gardens. This property would be ideal for a professional couple or a single occupant.

- First Floor Flat
- One Bedroom
- Modern Bathroom
- Communal Gardens
- Furnished
- Close to Stations

For further information on the costs associated with renting a property, please pop into our office or visit our website.



**FIRST FLOOR**

APPROX. GROSS INTERNAL FLOOR AREA 480 SQ FT 44.6 SQ METRES

**Hanson Close, London, SW12**

Copyright nichecom.co.uk 2015 Produced for Jacksons the Independent Estate Agents REF : 72197

Jacksons Balham  
8-11 Balham Station Road  
London  
SW12 9SG  
020 8675 6565  
balham.lettings@jacksonsestateagents.com

Energy Rating: C We aim to make our particulars both accurate and reliable. However they are not guaranteed; nor do they form part of an offer or contract. If you require clarification on any points then please contact us, especially if you're traveling some distance to view. Please note that appliances and heating systems have not been tested and therefore no warranties can be given as to their good working order.