



BYRNE ROAD, SW12

£600,000

- Two Double Bedrooms
- Central Balham
- Beautiful Condition
- No Onward Chain
- Open Plan Kitchen Diner
- Energy Rating:





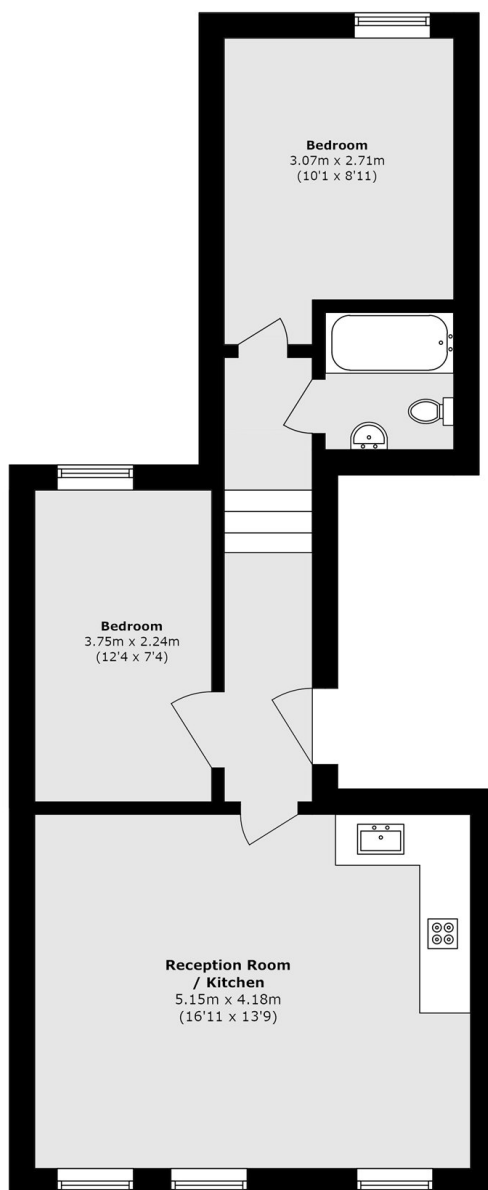
ABOUT THE HOME

A beautifully finished two double bedroom first floor Victorian flat on Byrne Road in central Balham. The property also offers an open plan kitchen diner, modern bathroom and no onward chain.

Byrne Road is ideally located in central Balham, close to Tooting Bec Common and within a short walk of Balham Underground / Overground and plenty of shops, bars and restaurants.







Total area (approx.): 47.7 sq. m (513.4 sq. ft)

JACKSONS BALHAM

8-11 Balham Station Road,
London, SW12 9SG
Sales: 020 8675 6555
Lettings: 020 8675 6565

Energy Rating: We aim to make our particulars both accurate and reliable. However they are not guaranteed; nor do they form part of an offer or contract. If you require clarification on any points then please contact us, especially if you're traveling some distance to view. Please note that appliances and heating systems have not been tested and therefore no warranties can be given as to their good working order.