



EATONVILLE ROAD, SW17

£4,000 PCM

- Semi-detached house
- Newly decorated
- Four double bedrooms
- Close to Balham Station
- Furnished
- Energy rating: D





ABOUT THE HOME

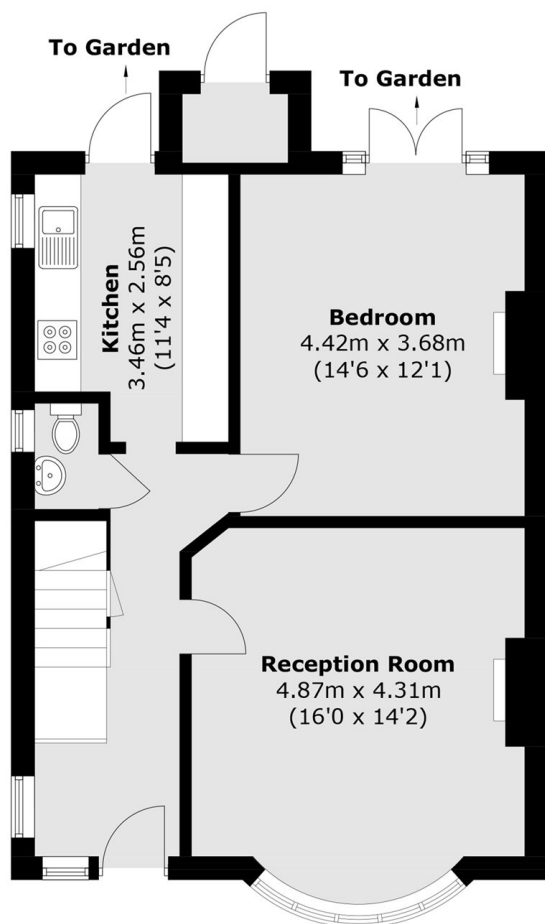
A large four bedroom house, conveniently located between Balham and Tooting Bec, This property would be suitable for professional sharers.

The accommodation comes complete with a large reception room, modern kitchen, four bedrooms, fitted bathroom and a separate WC. The property further benefits from access to a well kept private garden.

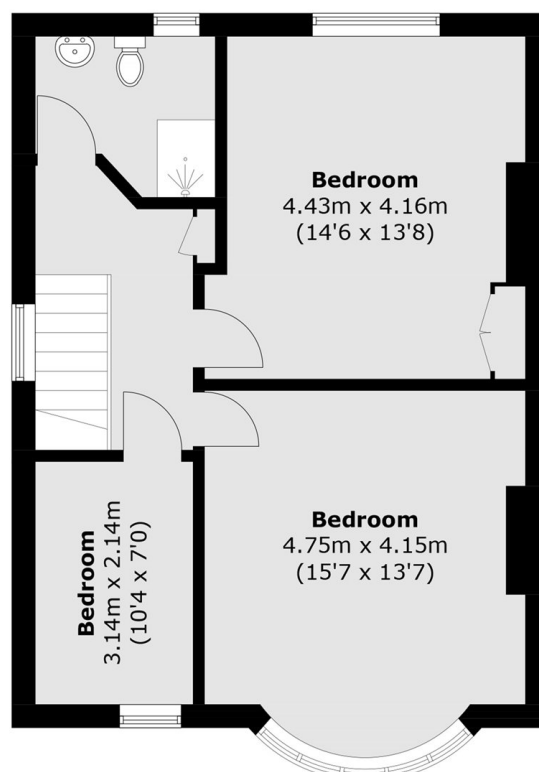
Eatonville Road is equidistant to Balham Station and Tooting Bec underground and is within close proximity to an array of shops, bars and restaurants Balham has to offer.







Ground Floor



First Floor

Total area (approx.): 113.6 sq. m (1,222.7 sq. ft)
 External Store: 1.3 sq. m (14.0 sq. ft)

JACKSONS BALHAM

8-11 Balham Station Road,
 London, SW12 9SG
 Sales: 020 8675 6555
 Lettings: 020 8675 6565

Energy Rating: D We aim to make our particulars both accurate and reliable. However they are not guaranteed; nor do they form part of an offer or contract. If you require clarification on any points then please contact us, especially if you're traveling some distance to view. Please note that appliances and heating systems have not been tested and therefore no warranties can be given as to their good working order.