



SALFORD ROAD, SW2

£625,000

- Two Double Bedrooms
- Victorian Conversion
- Garden
- Great Condition
- Close to Tooting Bec Common
- Energy Rating: C





## ABOUT THE HOME

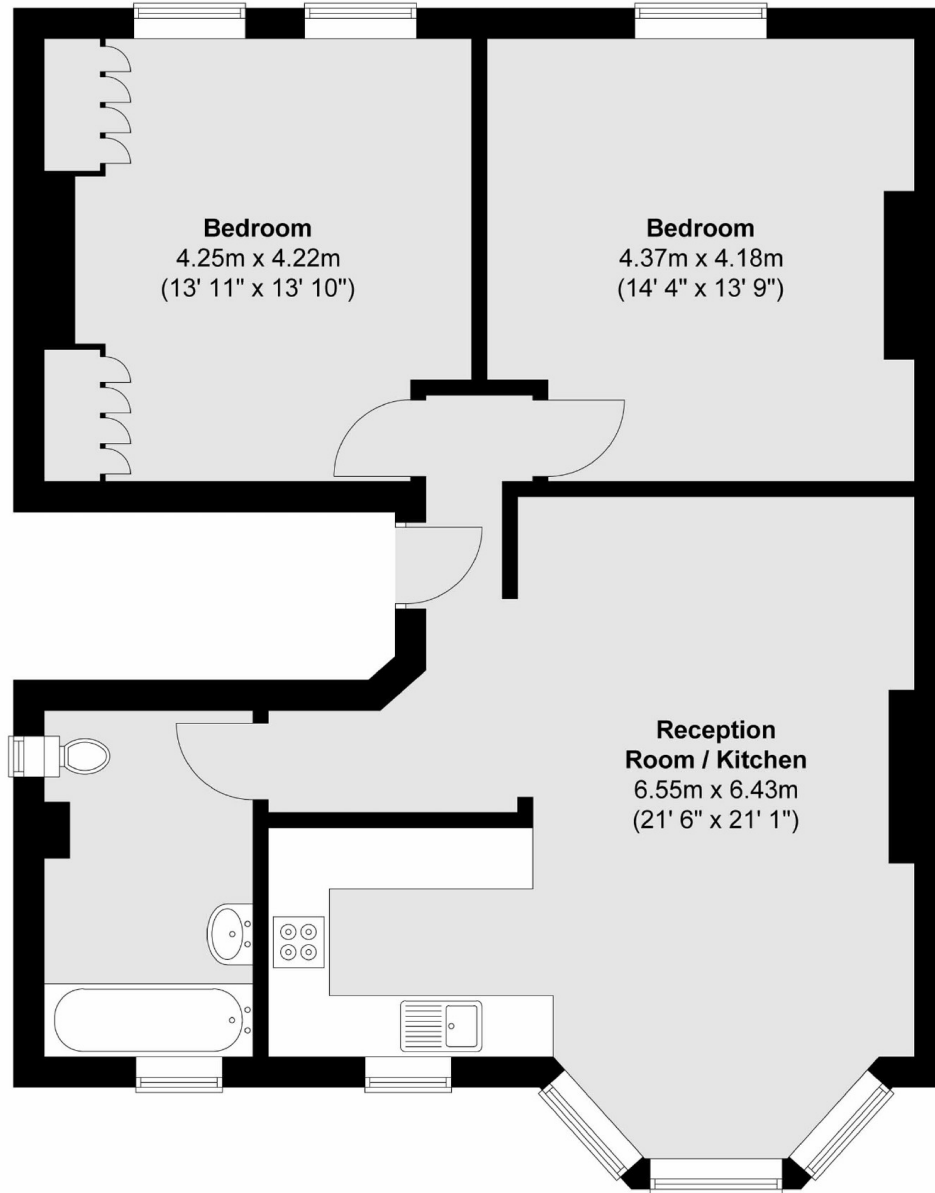
A well proportioned two double bedroom first floor Victorian conversion flat. This spacious property measures in excess of 850 square feet, has a large open plan kitchen/reception room, two equal sized double bedrooms and a refurbished bathroom. It also benefits from a private garden.

Salford Road is a popular residential road in Balham's Telford Park Estate. Balham mainline and underground station is within easy reach as are the vast array of shops, cafés, bars and restaurants local to the area. The green open spaces of Tooting Bec Common are also close by.









Total area (approx.) : 79.6 sq. m (857 sq. ft)

#### JACKSONS BALHAM

8-11 Balham Station Road,  
London, SW12 9SG  
Sales: 020 8675 6555  
Lettings: 020 8675 6565

Energy Rating: We aim to make our particulars both accurate and reliable. However they are not guaranteed; nor do they form part of an offer or contract. If you require clarification on any points then please contact us, especially if you're traveling some distance to view. Please note that appliances and heating systems have not been tested and therefore no warranties can be given as to their good working order.