



BALHAM HIGH ROAD, SW17

£500,000

- Large One Bedroom Apartment
- Modern Development
- Central Location
- Great Condition
- 672 Square Feet
- Energy Rating: B







## ABOUT THE HOME

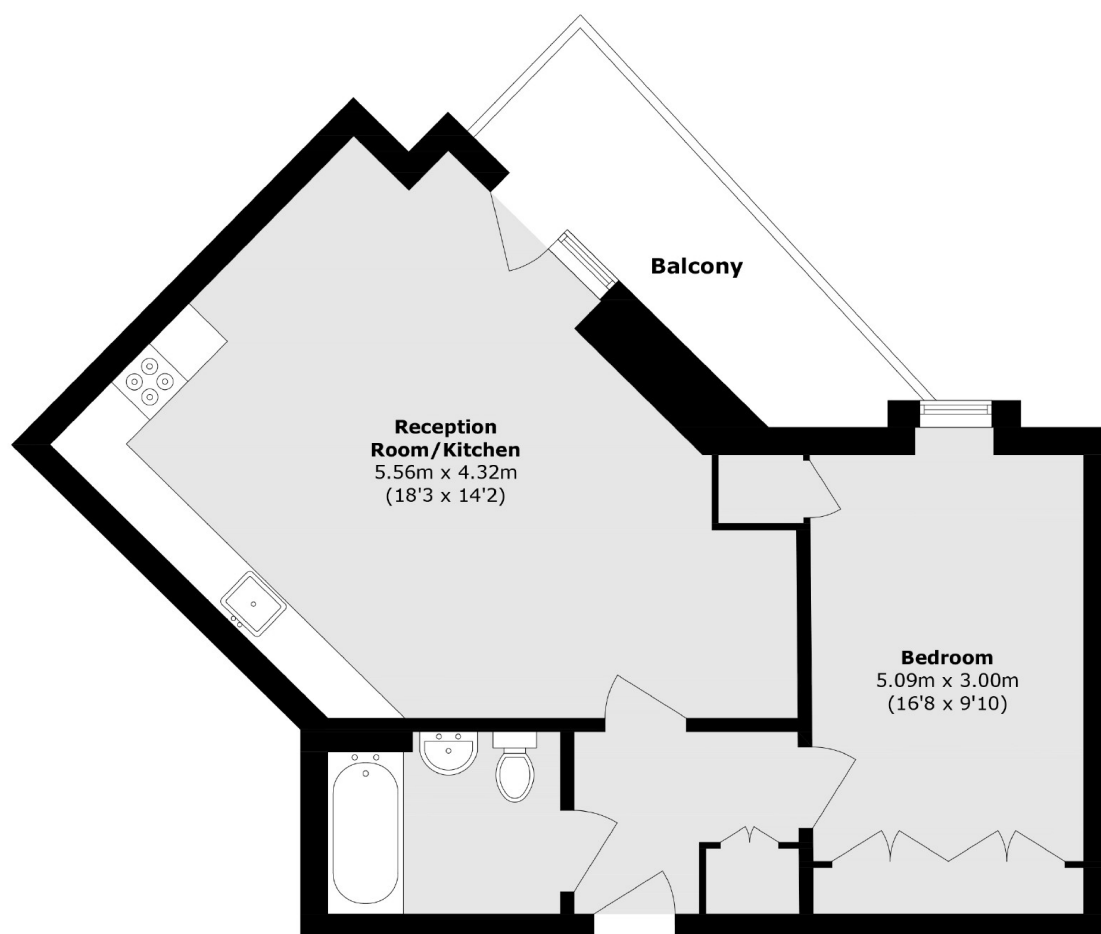
A larger than average one bedroom modern build apartment in a sought after residential development. This lovely flat measures 672 square feet, is in excellent condition and has a large private balcony which overlooks the communal gardens to the rear of the building

Tramyard Apartments is situated in the heart of Balham. This new development allows for easy access to Balham, Tooting Bec and Wandsworth Common stations as well as the vast array of shops, bars and restaurants Balham has to offer.









Total area (approx.): 62.5 sq. m (672.7 sq. ft)

Balcony area (approx.): 8.0 sq. m (86.1 sq. ft)

#### JACKSONS BALHAM

8-11 Balham Station Road,  
London, SW12 9SG  
Sales: 020 8675 6555  
Lettings: 020 8675 6565

Energy Rating: We aim to make our particulars both accurate and reliable. However they are not guaranteed; nor do they form part of an offer or contract. If you require clarification on any points then please contact us, especially if you're traveling some distance to view. Please note that appliances and heating systems have not been tested and therefore no warranties can be given as to their good working order.