



TELFORD AVENUE, SW2

£735,000

- Two double Bedrooms
- Kitchen Diner
- Share Of Freehold
- South Facing Garden
- Next To Common
- Energy Rating:





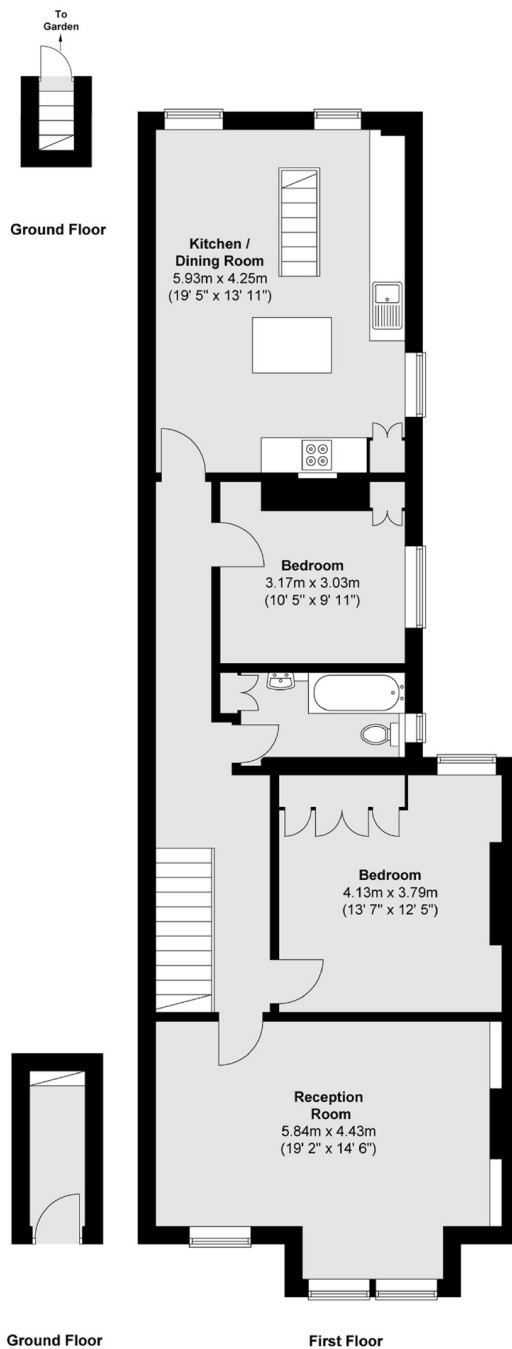
ABOUT THE HOME

A beautifully presented two double bedroom first floor maisonette, perfectly situated with the common at the end of the road. The property is presented in excellent condition, featuring a spacious reception and contemporary fitted kitchen diner that leads out onto a south facing garden.

The property is situated in the Heart of Balham's sought after Telford Park conservation area. With easy access to public transport leading into Brixton, Streatham and Balham.







Total area (approx.) : 97.7 sq. m (1052 sq. ft)

JACKSONS BALHAM

8-11 Balham Station Road,
London, SW12 9SG
Sales: 020 8675 6555
Lettings: 020 8675 6565

Energy Rating: We aim to make our particulars both accurate and reliable. However they are not guaranteed; nor do they form part of an offer or contract. If you require clarification on any points then please contact us, especially if you're traveling some distance to view. Please note that appliances and heating systems have not been tested and therefore no warranties can be given as to their good working order.