



BURNBURY ROAD, SW12

£975,000

- Three Double Bedrooms
- Split-Level
- Modern Finish
- Hyde Farm
- In Excess of 1200 Square Feet
- Energy Rating: D



3



2



2



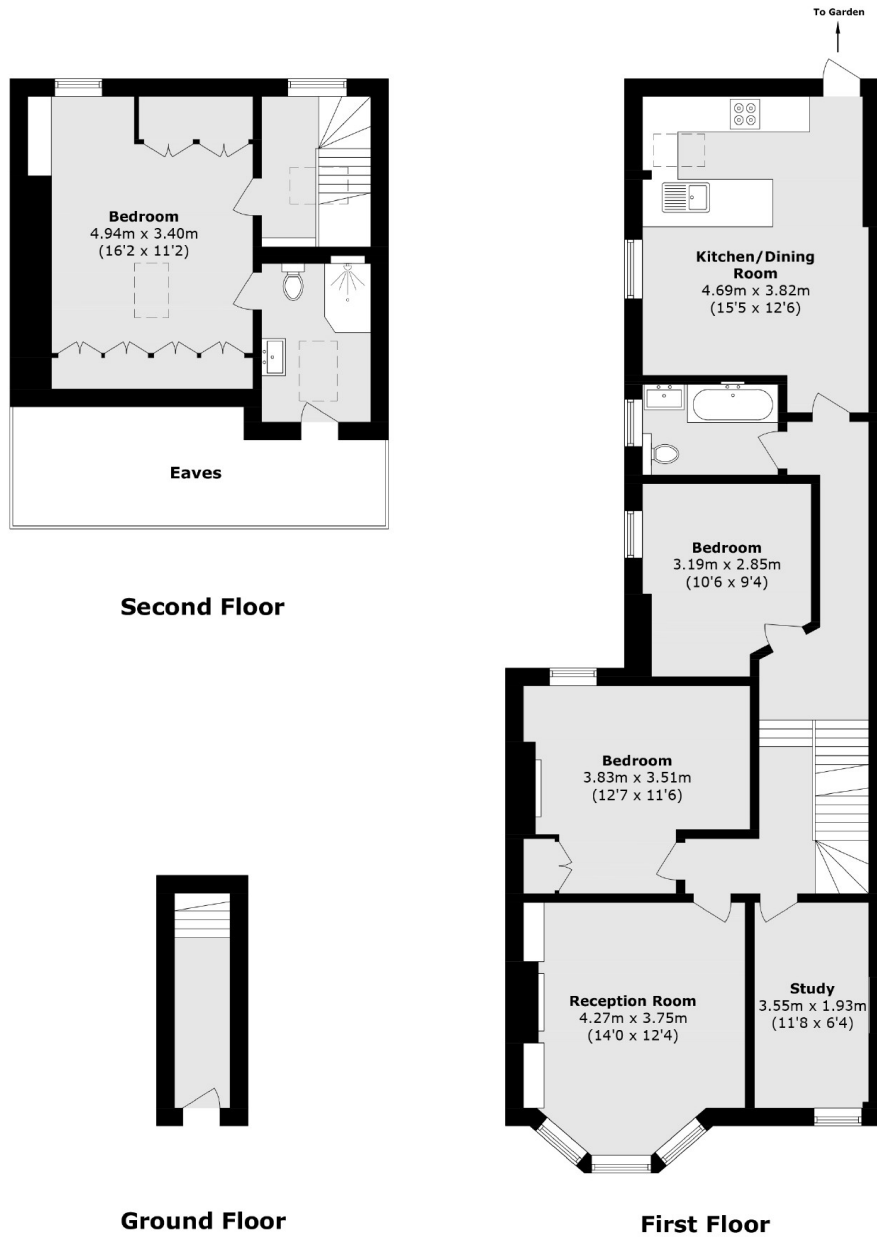
ABOUT THE HOME

A charming fully extended three double bedroom two bathroom split level maisonette in the popular Hyde Farm Estate. This property has been recently renovated is presented in fantastic condition, has a private garden and benefits from an additional study/fourth bedroom.

Burnbury Road is situated within the Hyde Farm area within close proximity to Balham and just moments from the green spaces of Tooting Bec Common. It is well located for easy access to Balham underground and mainline stations as well as all of the shops, bars, restaurants and supermarkets on offer locally.







Total area (approx.): 114.1 sq. m (1228.1 sq. ft)

JACKSONS BALHAM

8-11 Balham Station Road,
London, SW12 9SG
Sales: 020 8675 6555
Lettings: 020 8675 6565

Energy Rating: We aim to make our particulars both accurate and reliable. However they are not guaranteed; nor do they form part of an offer or contract. If you require clarification on any points then please contact us, especially if you're traveling some distance to view. Please note that appliances and heating systems have not been tested and therefore no warranties can be given as to their good working order.