



BEDFORD HILL, SW12

£700,000

- Two Double Bedrooms
- Two Private Gardens
- Excellent Living Space
- Central Balham
- Own Front Door
- Energy Rating: C



2



1



1





## ABOUT THE HOME

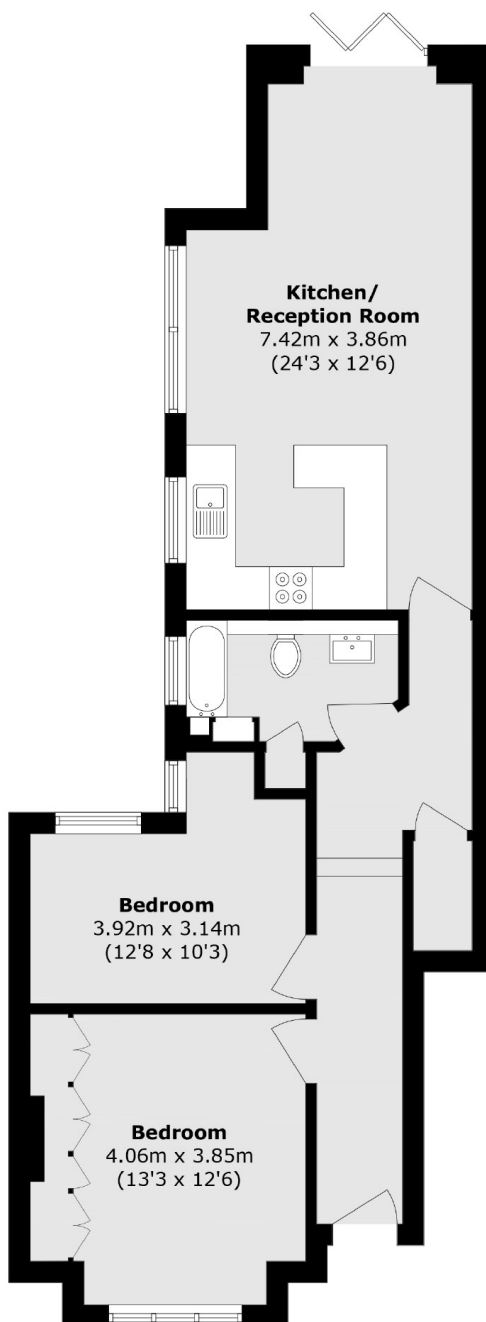
A ground floor Victorian Maisonette in excellent condition throughout. This property features two generous double bedrooms, a modern bathroom, and a spacious open plan kitchen reception room. This leads on to a private garden at the rear, as well as a second private garden to the side of the property. There is also the possibility to extend into the side return (STPP).

Located on Bedford Hill, this property is within close proximity to Balham mainline and underground stations as well as the vast array of shops, bars, restaurants and supermarkets local to the area. Tooting Bec Common is also just moments away at the top of Bedford Hill.









Total area (approx.): 73.4 sq. m (790.0 sq. ft)

#### JACKSONS BALHAM

8-11 Balham Station Road,  
London, SW12 9SG  
Sales: 020 8675 6555  
Lettings: 020 8675 6565

Energy Rating: C We aim to make our particulars both accurate and reliable. However they are not guaranteed; nor do they form part of an offer or contract. If you require clarification on any points then please contact us, especially if you're traveling some distance to view. Please note that appliances and heating systems have not been tested and therefore no warranties can be given as to their good working order.