



CAVENDISH ROAD, SW12

£2,700 PCM

- Victorian conversion
- Recently refurbished
- Two bedrooms
- Two bathrooms
- Private roof terrace
- Energy rating: B





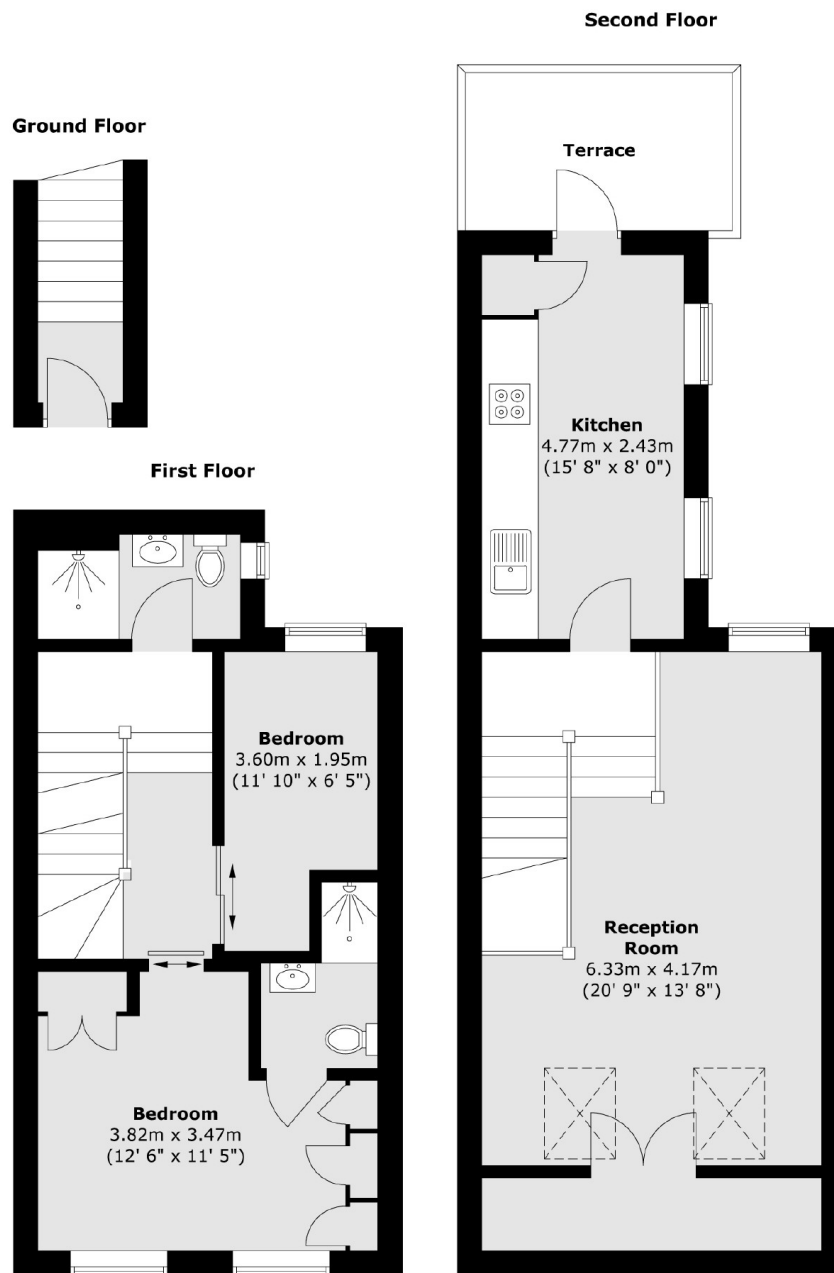
ABOUT THE HOME

Located close to the centre of Balham, is this well presented two bedroom flat, split over the first and second floors of a Victorian building. This property is suitable for a professional couple.

Cavendish Road is perfectly positioned for Tooting Bec Common and is ideally situated for the amenities of Balham town centre. Balham mainline station provides onward journeys to London Victoria via Balham and Clapham Junction whilst Balham underground station serves Waterloo and the City via the Northern Line.







Total area (approx.) : 81.4 sq. m (876 sq. ft)
Total terrace area (approx.) : 5.5 sq. m (59 sq. ft)

JACKSONS BALHAM

8-11 Balham Station Road,
London, SW12 9SG
Sales: 020 8675 6555
Lettings: 020 8675 6565

Energy Rating: B We aim to make our particulars both accurate and reliable. However they are not guaranteed; nor do they form part of an offer or contract. If you require clarification on any points then please contact us, especially if you're traveling some distance to view. Please note that appliances and heating systems have not been tested and therefore no warranties can be given as to their good working order.