



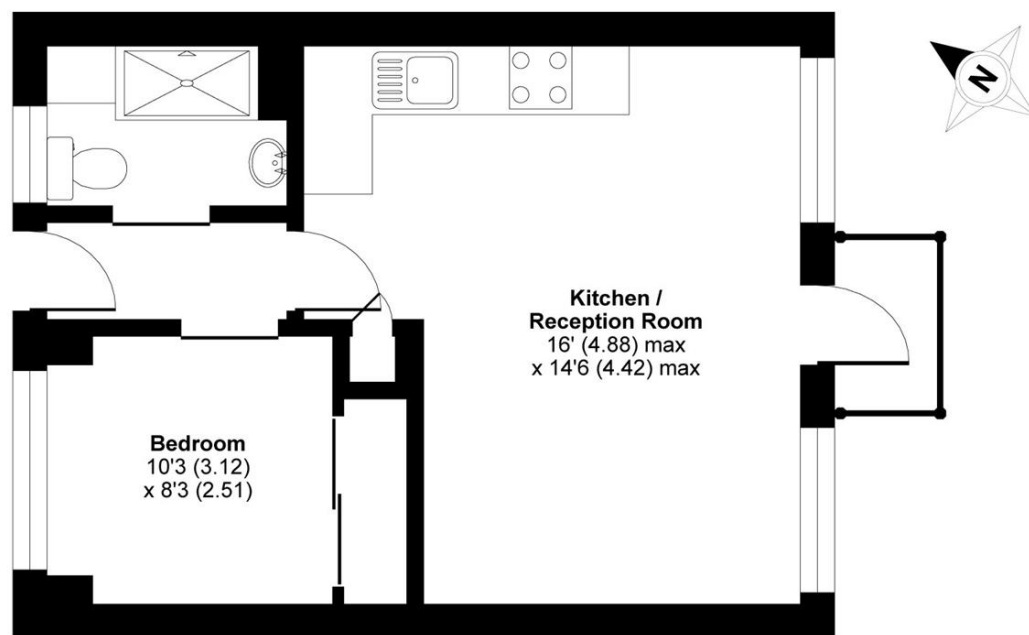
Holderness Road, SW17

£1,250 PCM

A recently refurbished one double bedroom purpose built flat located within close proximity of Tooting Bec and Wandsworth Common stations.

- Purpose Built Flat
- One Double Bedroom
- Open Plan Lounge and Kitchen
- Modern Shower Room
- Close To Stations
- Private Balcony

For further information on the costs associated with renting a property, please pop into our office or visit our website.

**FOURTH FLOOR**

APPROX. GROSS INTERNAL FLOOR AREA 358 SQ FT 33.3 SQ METRES

Alfred Butt House, Holderness Road, London, SW17

Copyright nichecom.co.uk 2016 Produced for Jacksons the Independent Estate Agents REF : 148870

Jacksons Tooting
26 Tooting Bec Road
London
SW17 8BD
020 8767 0522
tooting.lettings@jacksonsestateagents.com

Energy Rating: D We aim to make our particulars both accurate and reliable. However they are not guaranteed; nor do they form part of an offer or contract. If you require clarification on any points then please contact us, especially if you're traveling some distance to view. Please note that appliances and heating systems have not been tested and therefore no warranties can be given as to their good working order.