



TERRAPIN ROAD, SW17

£550,000

- Two Bedrooms
- First Floor
- Great Condition
- Heaver Estate
- Victorian Conversion
- Energy rating:



2



1



1

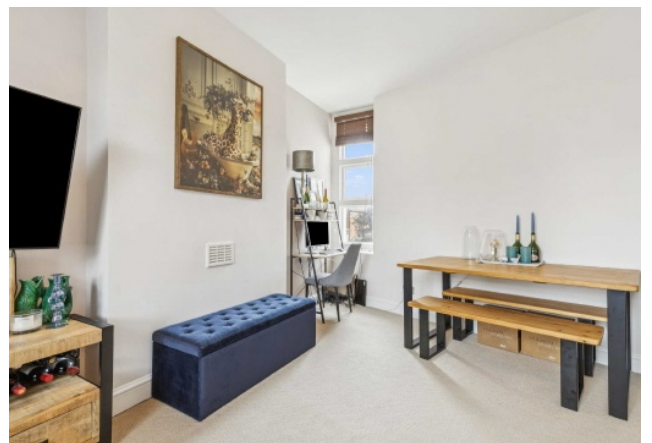




## ABOUT THE HOME

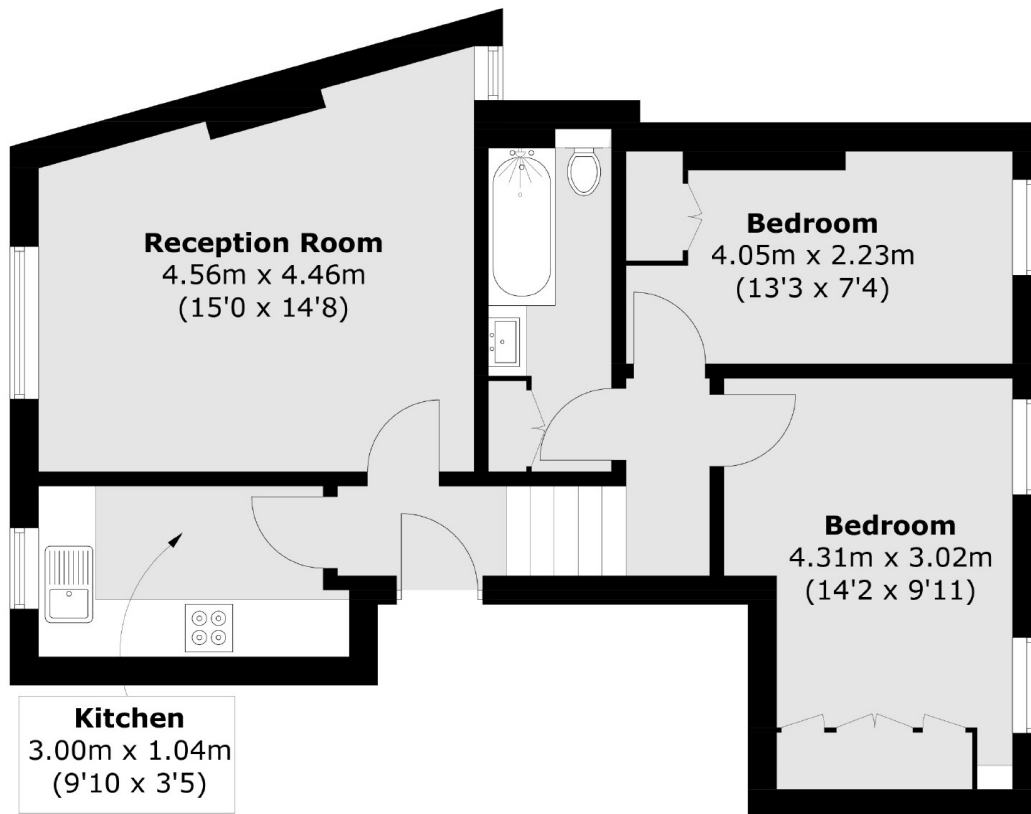
A charming two bedroom first floor Victorian conversion flat well positioned in a highly desirable road in the Heaver Estate...

Terrapin Road is a popular residential road in the heart of Balham's popular Heaver Estate. Balham Mainline and underground station is within easy reach as are the vast array of shops, bars and restaurants local to the area. The green spaces of Tooting Common are also a short distance.









## First Floor

Total area (approx.): 56.2 sq. m (604.9 sq. ft)

### JACKSONS BALHAM

8-11 Balham Station Road,  
London, SW12 9SG  
Sales: 020 8675 6555  
Lettings: 020 8675 6565

Energy Rating: We aim to make our particulars both accurate and reliable. However they are not guaranteed; nor do they form part of an offer or contract. If you require clarification on any points then please contact us, especially if you're traveling some distance to view. Please note that appliances and heating systems have not been tested and therefore no warranties can be given as to their good working order.