



MIDMOOR ROAD, SW12

£895,000

- Three Bedrooms
- Two Bathrooms
- South Facing Private Garden

- Share Of Freehold
- Split Level
- EPC : C



3



2



2

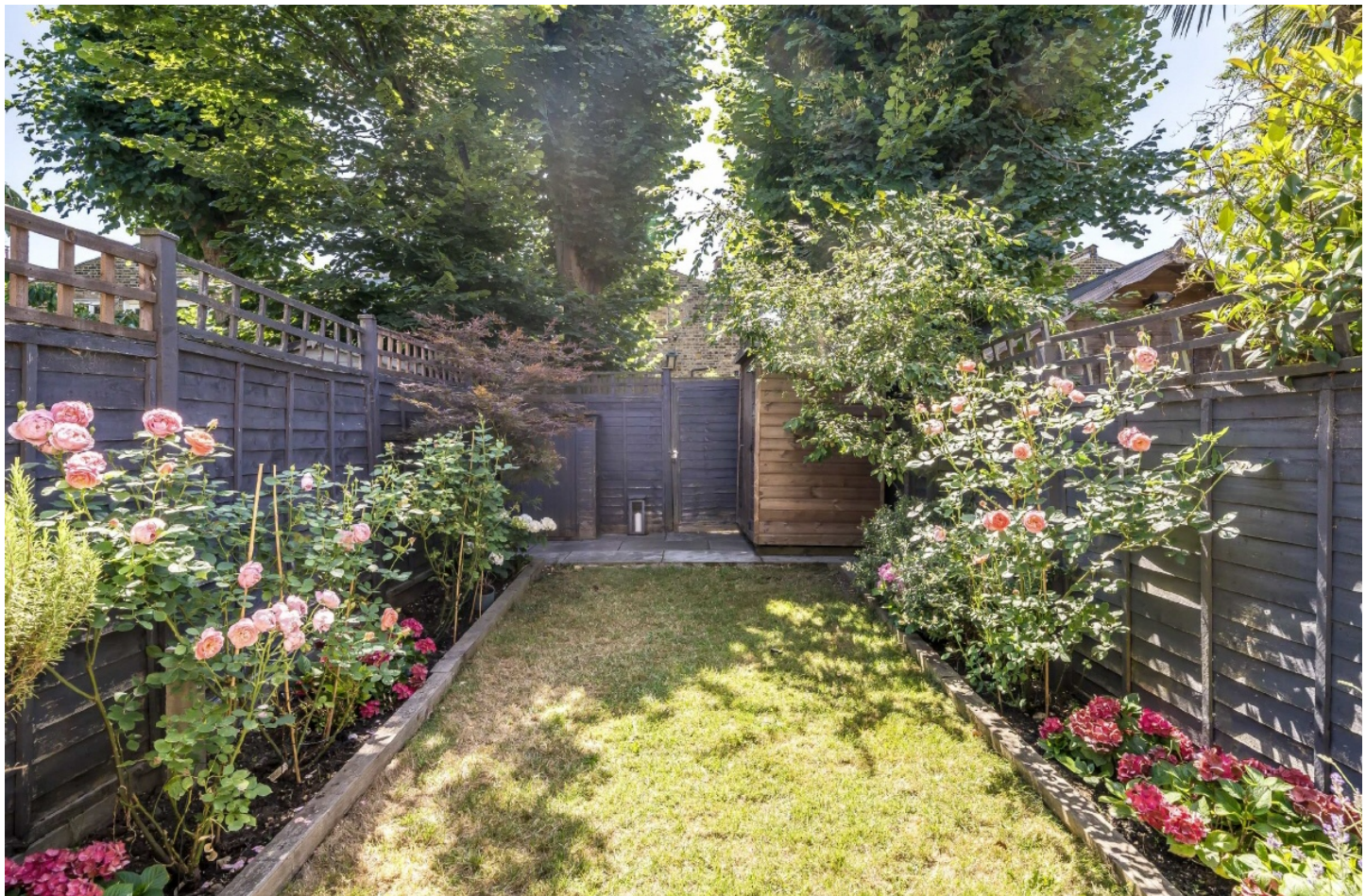


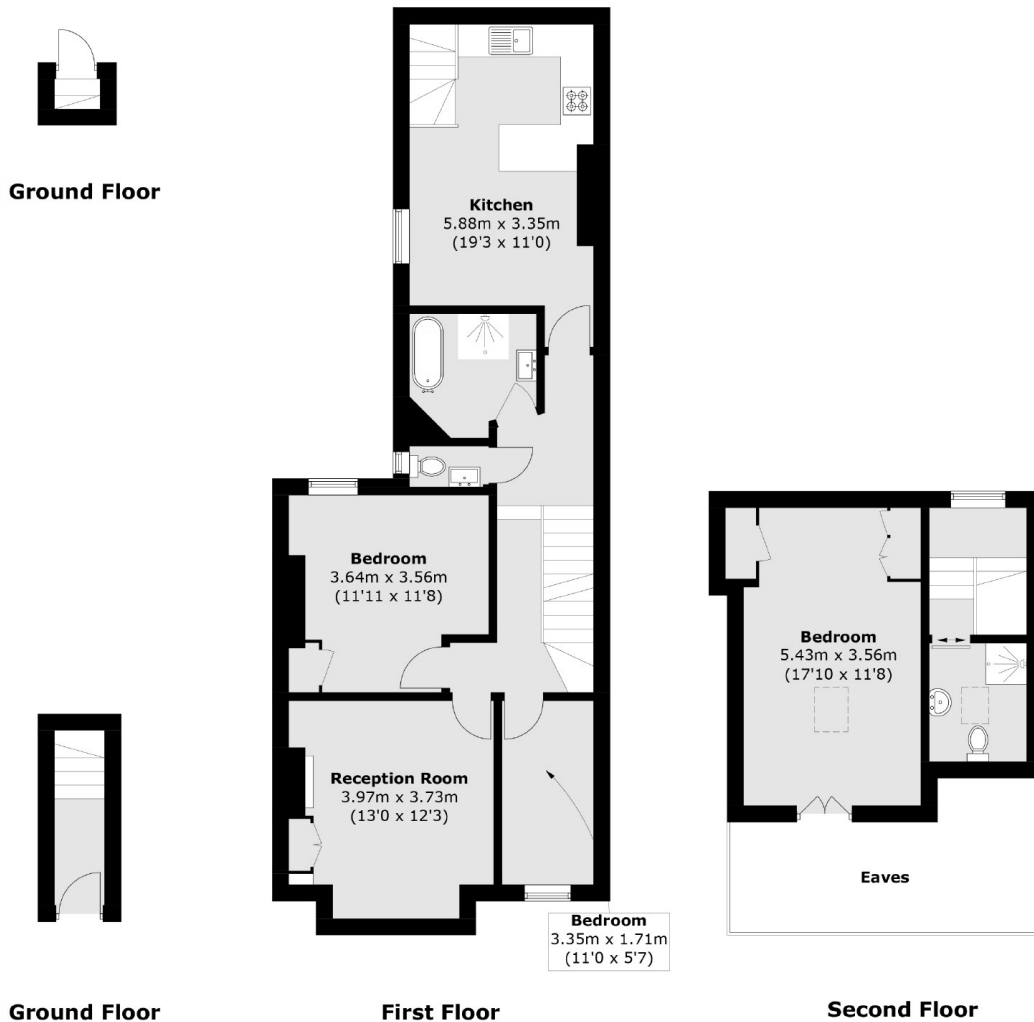
ABOUT THE HOME

A beautiful first floor split level maisonette with south facing garden in the Hyde Farm area. The property is presented in immaculate condition, featuring three bedrooms, full loft conversion, wet room bathroom, separate reception, and a lovely kitchen diner with a built in seating area leading to a larger than average private garden.

Midmoor Road is located just moments from the green spaces of Tooting Bec Common and nestled between two Ofsted outstanding primary schools. It is well located for easy access to Balham underground and mainline stations as well as all of the shops, bars, restaurants and supermarkets on offer locally.







Total area (approx.): 100.2 sq. m (1,077.9 sq. ft)
(Excluding Eaves)

JACKSONS BALHAM

8-11 Balham Station Road,
London, SW12 9SG
Sales: 020 8675 6555
Lettings: 020 8675 6565

Energy Rating: We aim to make our particulars both accurate and reliable. However they are not guaranteed; nor do they form part of an offer or contract. If you require clarification on any points then please contact us, especially if you're traveling some distance to view. Please note that appliances and heating systems have not been tested and therefore no warranties can be given as to their good working order.