



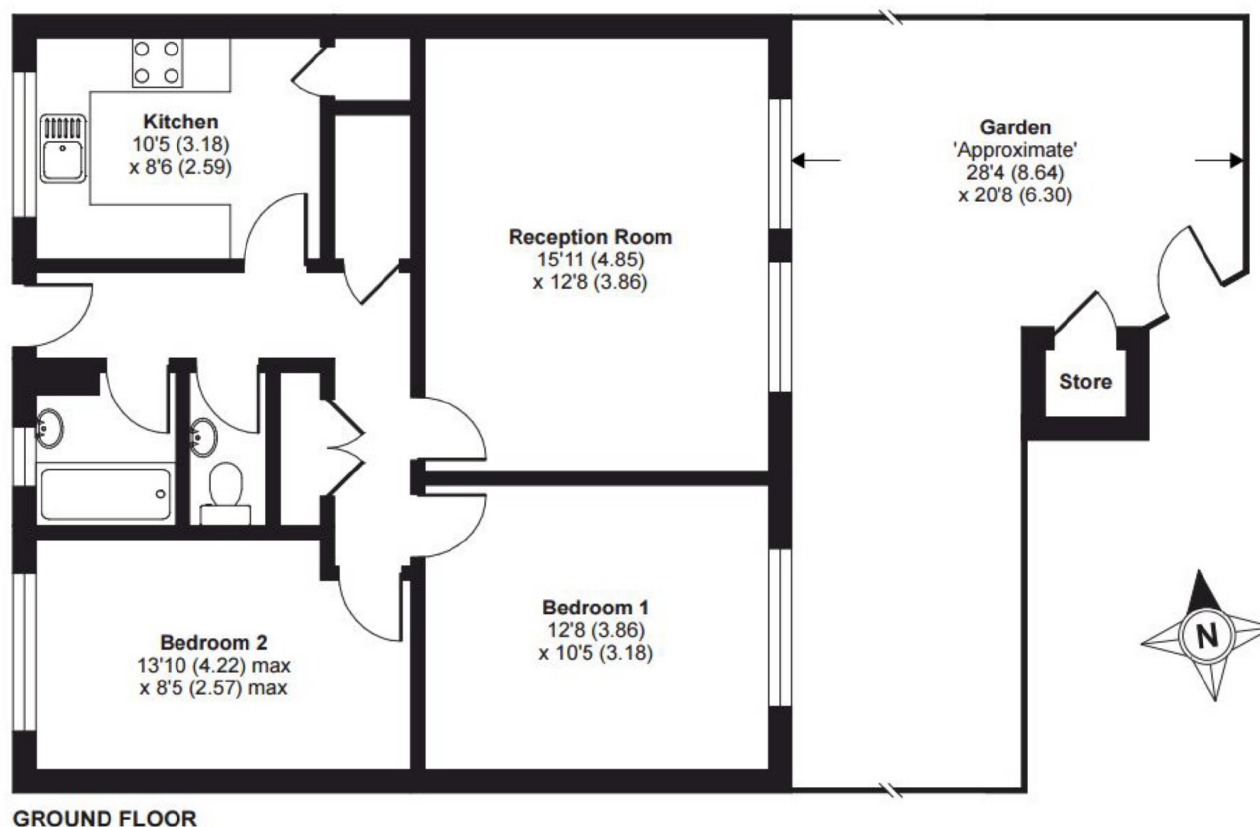
## Larch Close, SW12

**£1,800 PCM**

A spacious two bedroom purpose built flat located on the ground floor. This property would be suitable for a professional couple or professional sharers.

- Large Reception Room
- Fitted Kitchen
- Two Double Bedrooms
- Fitted Bathroom
- Close to Station
- Furnished

For further information on the costs associated with renting a property, please pop into our office or visit our website.



APPROX. GROSS INTERNAL FLOOR AREA 726 SQ FT 67.4 SQ METRES (EXCLUDES STORE)

Larch Close, London, SW12

Copyright nichecom.co.uk 2017 Produced for Jacksons the Independent Estate Agents REF : 192535

Jacksons Balham  
8-11 Balham Station Road  
London  
SW12 9SG  
020 8675 6565  
balham.lettings@jacksonsestateagents.com

Energy Rating: C We aim to make our particulars both accurate and reliable. However they are not guaranteed; nor do they form part of an offer or contract. If you require clarification on any points then please contact us, especially if you're traveling some distance to view. Please note that appliances and heating systems have not been tested and therefore no warranties can be given as to their good working order.