



RAVENSLEA ROAD, SW12

£825,000

- Two Double Bedrooms
- Private South Facing Garden
- Victorian Conversion
- No Onward Chain
- Ground Floor Flat
- EPC Rating : D





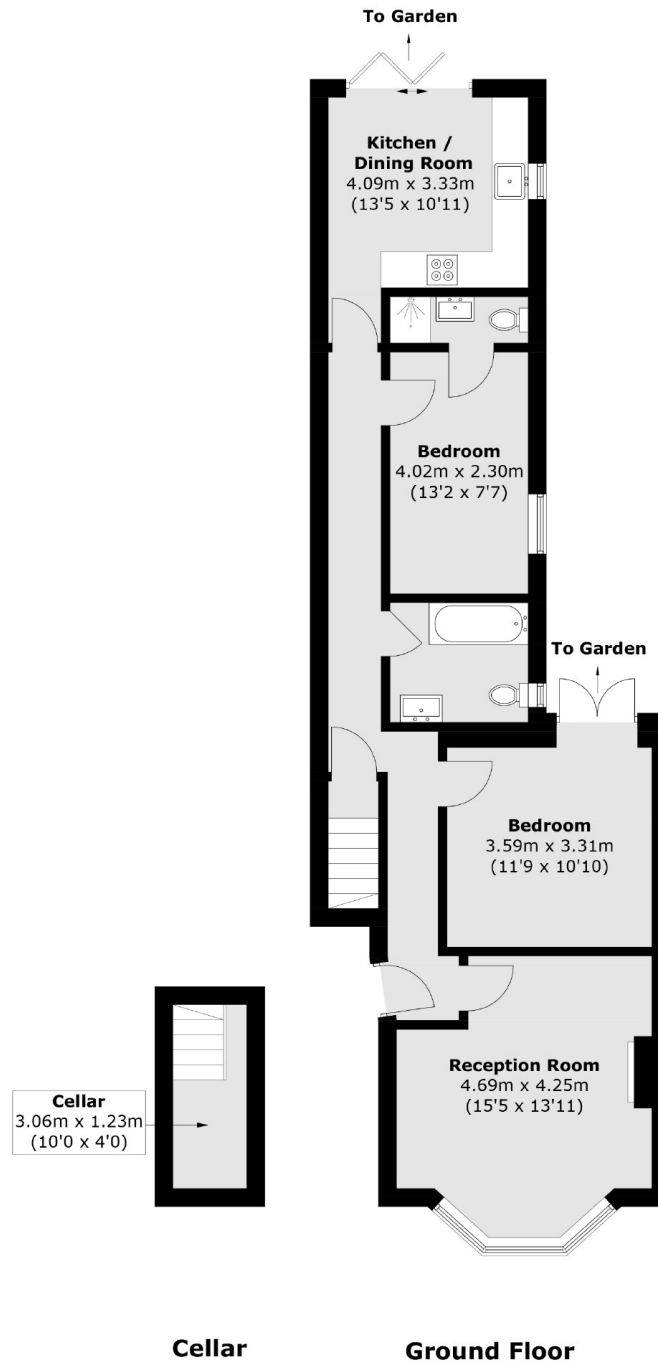
## ABOUT THE HOME

A beautifully finished two bedroom ground floor garden flat in the Nightingale Triangle. The property offers a large reception room at the front, two double bedrooms, a modern bathroom with an additional en suite and a bright kitchen diner at the back leading onto the private south facing garden. The property is also being offered with no onward chain.

Ravenslea Road is a highly sought after road in the Nightingale Triangle close to both Wandsworth Common station and Balham station. There are a host of amenities within easy reach in Balham and the Northcote Road, including a vast array of shops, bars and restaurants and the green open spaces of Wandsworth Common are also close by.







Total area (approx.): 77.1 sq. m (829.9 sq. ft)

### JACKSONS BALHAM

8-11 Balham Station Road,  
London, SW12 9SG  
Sales: 020 8675 6555  
Lettings: 020 8675 6565

Energy Rating: We aim to make our particulars both accurate and reliable. However they are not guaranteed; nor do they form part of an offer or contract. If you require clarification on any points then please contact us, especially if you're traveling some distance to view. Please note that appliances and heating systems have not been tested and therefore no warranties can be given as to their good working order.