



SISTOVA ROAD, SW12

£900,000

- 3 Double Bedrooms
- Central Balham
- No Onward Chain
- South Facing Garden
- Victorian Conversion
- EPC Rating: D



3



2



1



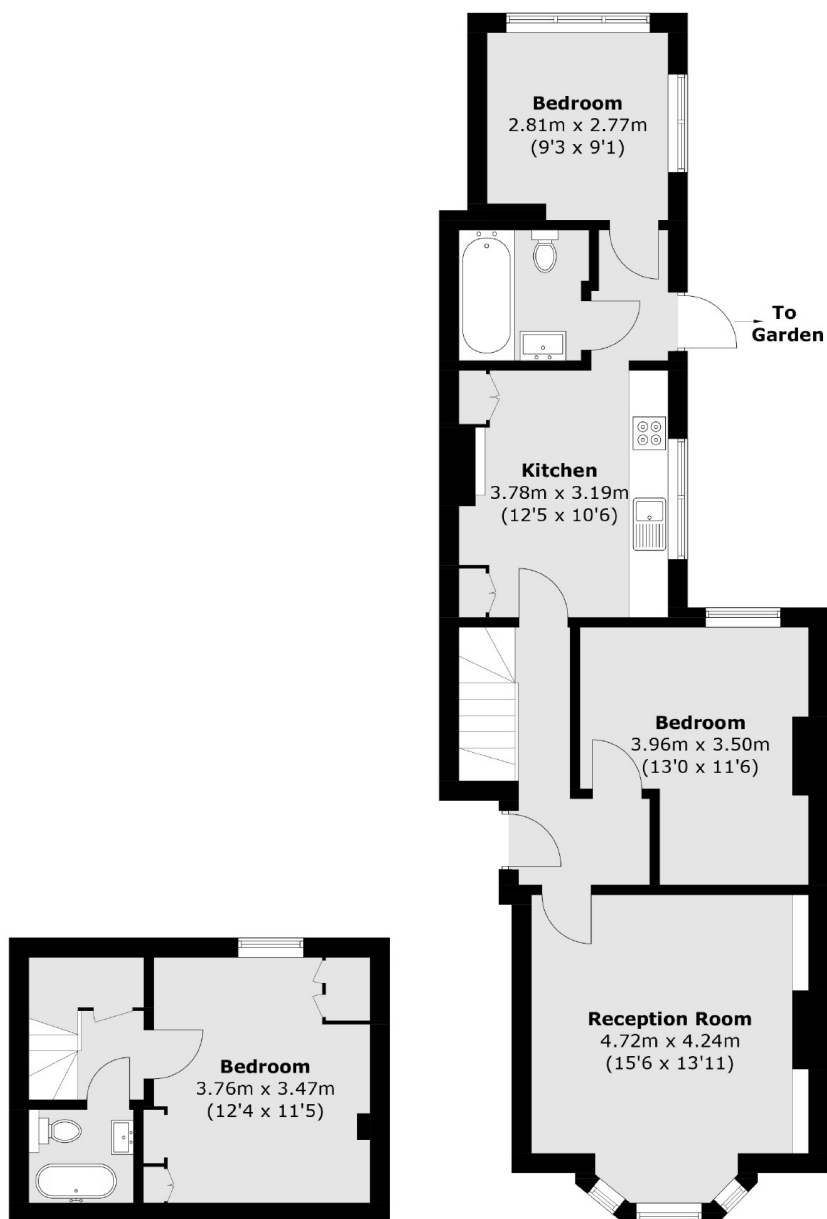
ABOUT THE HOME

A beautifully presented split level three bedroom ground floor flat in central Balham. The property also comprises of a large reception room, modern kitchen, two bathrooms and a south facing garden.

Sistova Road is a popular residential road in Central Balham. Balham mainline and underground stations are within easy reach as are the extensive array of shops, bars and restaurants local to the area. The green open spaces of Tooting Bec Common are also close by.







Lower Ground Floor

Ground Floor

Total area (approx.): 86.2 sq. m (927.8 sq. ft)

JACKSONS BALHAM

8-11 Balham Station Road,
London, SW12 9SG
Sales: 020 8675 6555
Lettings: 020 8675 6565

Energy Rating: We aim to make our particulars both accurate and reliable. However they are not guaranteed; nor do they form part of an offer or contract. If you require clarification on any points then please contact us, especially if you're traveling some distance to view. Please note that appliances and heating systems have not been tested and therefore no warranties can be given as to their good working order.