



Bedford Hill, SW12

£1,950 PCM

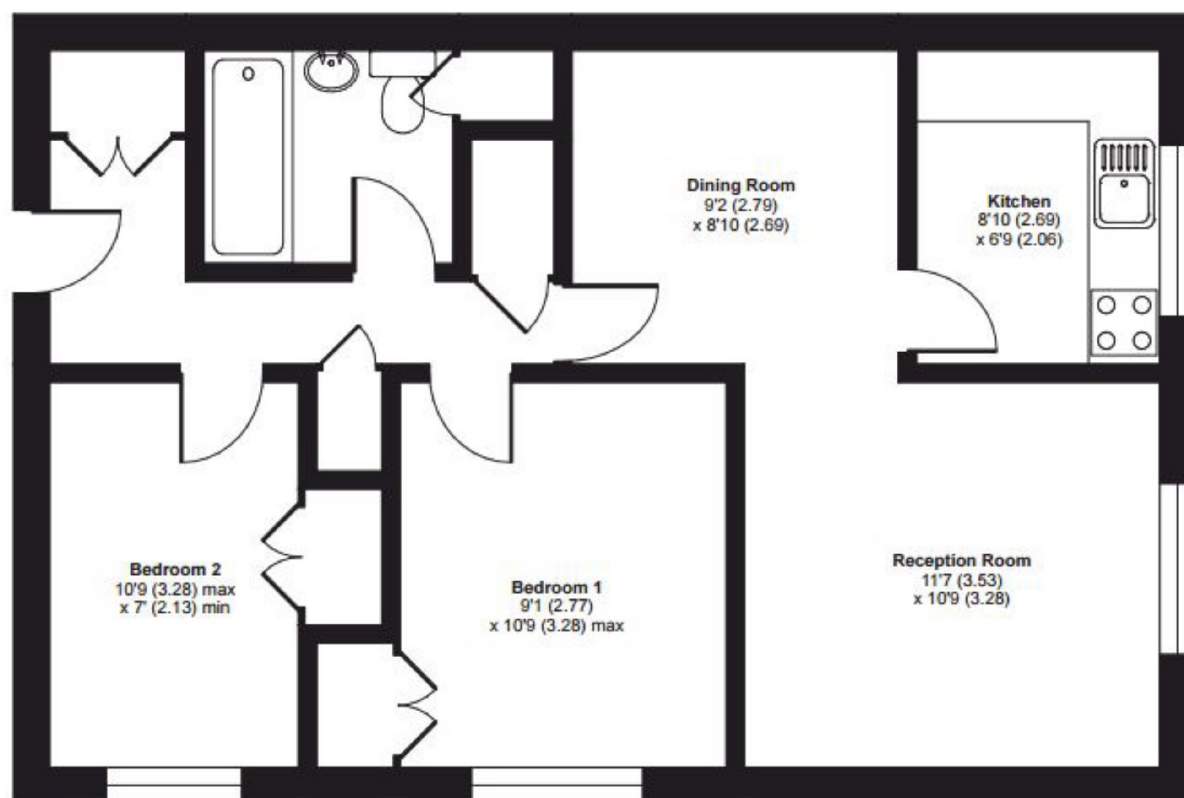
A large purpose built two bedroom flat. This property would be suitable for a professional couple or professional sharers.

- Purpose Built Flat
- Reception Room
- Modern Kitchen
- Two Double Bedrooms
- Bathroom Suite
- Furnished

For further information on the costs associated with renting a property, please pop into our office or visit our website.



Located on Bedford Hill, this location offers access to the plentiful selection of amenities the local area has to offer inclusive of coffee houses, bars and restaurants as well as excellent transport links.



GROUND FLOOR

APPROX. GROSS INTERNAL FLOOR AREA 629 SQ FT 58.4 SQ METRES

Hollybank, Bedford Hill, London, SW12

Copyright nichecom.co.uk 2017 Produced for Jacksons the Independent Estate Agents REF : 193401

Jacksons Balham
8-11 Balham Station Road
London
SW12 9SG
020 8675 6565
balham.lettings@jacksonsestateagents.com

Energy Rating: C We aim to make our particulars both accurate and reliable. However they are not guaranteed; nor do they form part of an offer or contract. If you require clarification on any points then please contact us, especially if you're traveling some distance to view. Please note that appliances and heating systems have not been tested and therefore no warranties can be given as to their good working order.