



THORNTON AVENUE, SW2

£2,600 PCM

- Three Bedroom
- Ground Floor Flat
- Shared Garden
- Unfurnished
- 1260 Sq Ft
- Short distance from Streatham Hill station



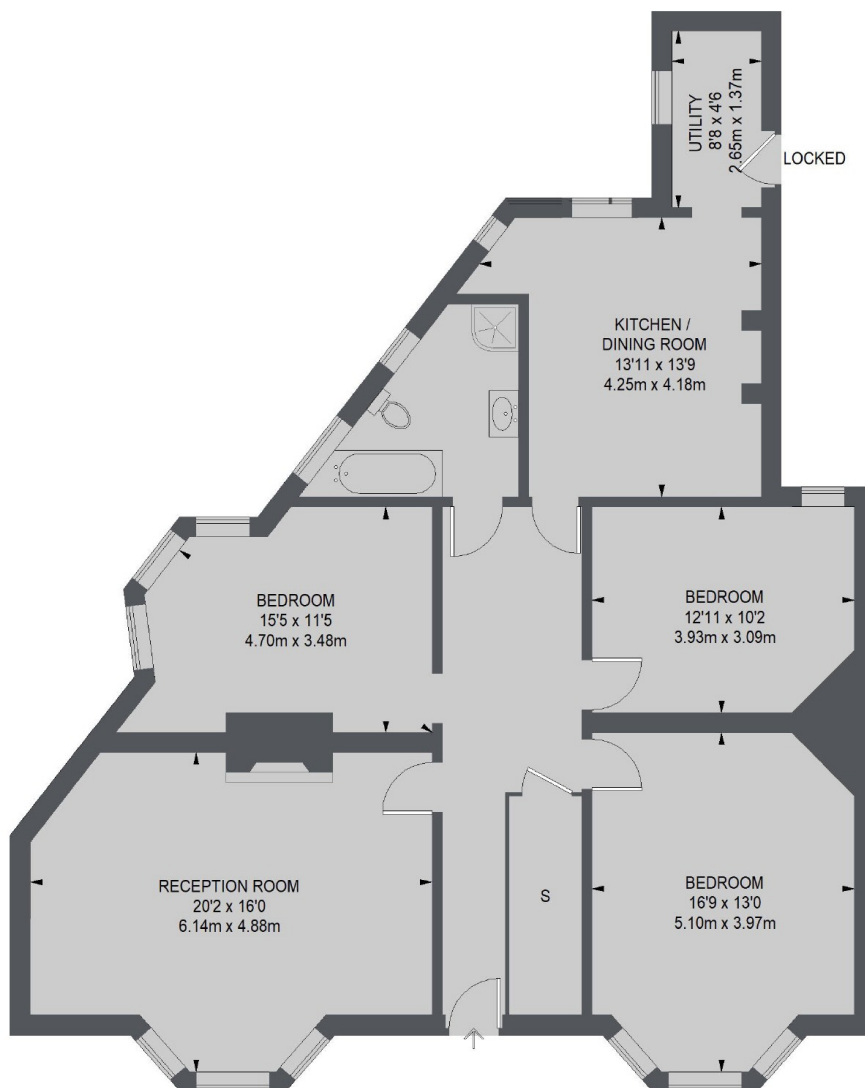
3



1



1



**GROUND FLOOR**

TOTAL APPROX. FLOOR AREA 1268 SQ. FT. (117.79 SQ. M.)

#### **JACKSONS BALHAM**

8-11 Balham Station Road,  
London, SW12 9SG  
Sales: 020 8675 6555  
Lettings: 020 8675 6565

Energy Rating: E We aim to make our particulars both accurate and reliable. However they are not guaranteed; nor do they form part of an offer or contract. If you require clarification on any points then please contact us, especially if you're traveling some distance to view. Please note that appliances and heating systems have not been tested and therefore no warranties can be given as to their good working order.