



Balham High Road, SW17

£2,700 PCM

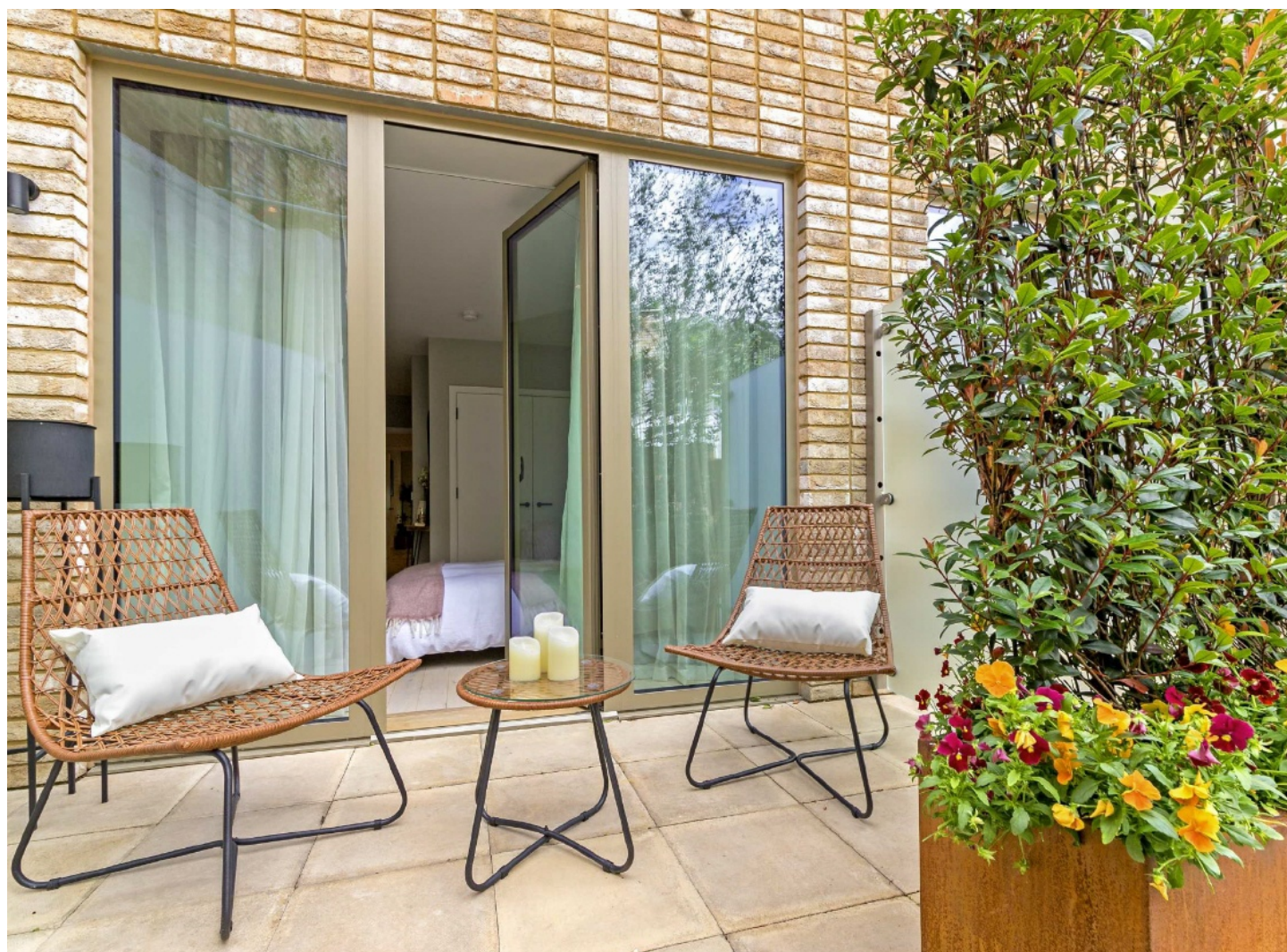
Located in the Heart of Balham, this brand new two double bedroom, two bathroom luxury split-level apartment comes finished to a high specification with ample storage throughout, a private balcony and direct access to the

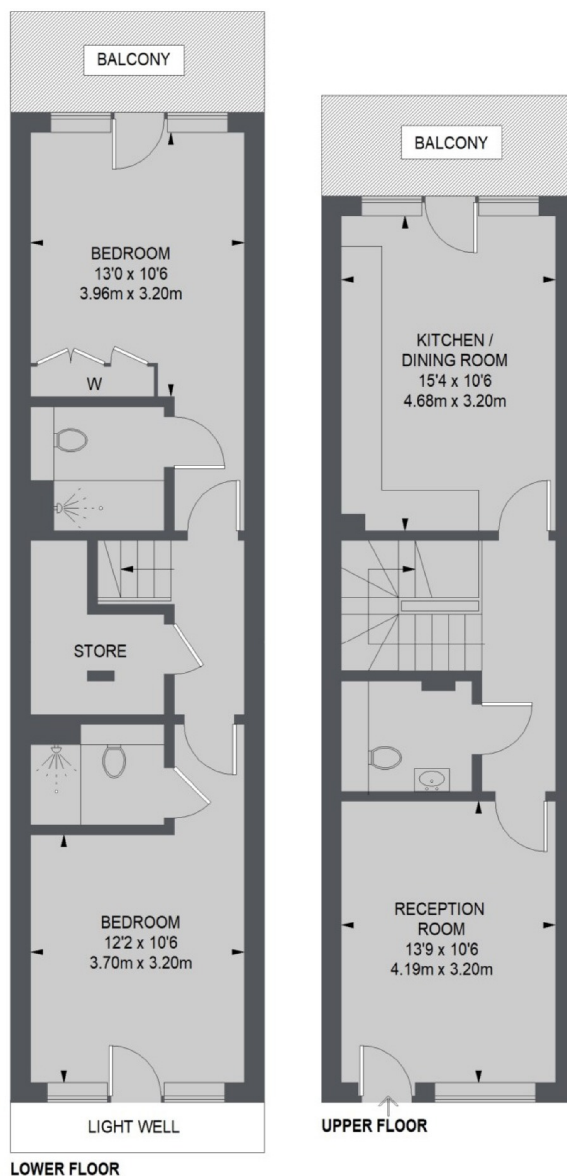
- High Specification
- Two Bedrooms
- Two Bathrooms
- Communal Gardens
- Cycle Storage
- Unfurnished

For further information on the costs associated with renting a property, please pop into our office or visit our website.



Situated in the centre of Balham, this new development is well positioned for easy access to Balham, Tooting Bec and Wandsworth Common stations offering mainline and underground services. The green open spaces of Wandsworth Common and Tooting Bec Common are also close by, as are the shops, bars and restaurants that the area has to offer.





TOTAL APPROX. FLOOR AREA 980 SQ. FT. (91.0 SQ. M.)

Jacksons Balham
 8-11 Balham Station Road
 London
 SW12 9SG
 020 8675 6565
balham.lettings@jacksonsestateagents.com

Energy Rating: B We aim to make our particulars both accurate and reliable. However they are not guaranteed; nor do they form part of an offer or contract. If you require clarification on any points then please contact us, especially if you're traveling some distance to view. Please note that appliances and heating systems have not been tested and therefore no warranties can be given as to their good working order.