



ROSSITER ROAD, SW12

£1,200,000

- End of Terrace
- Victorian House
- Central Balham Location

- 1241 Square Feet
- Great Condition
- EPC Rating: E





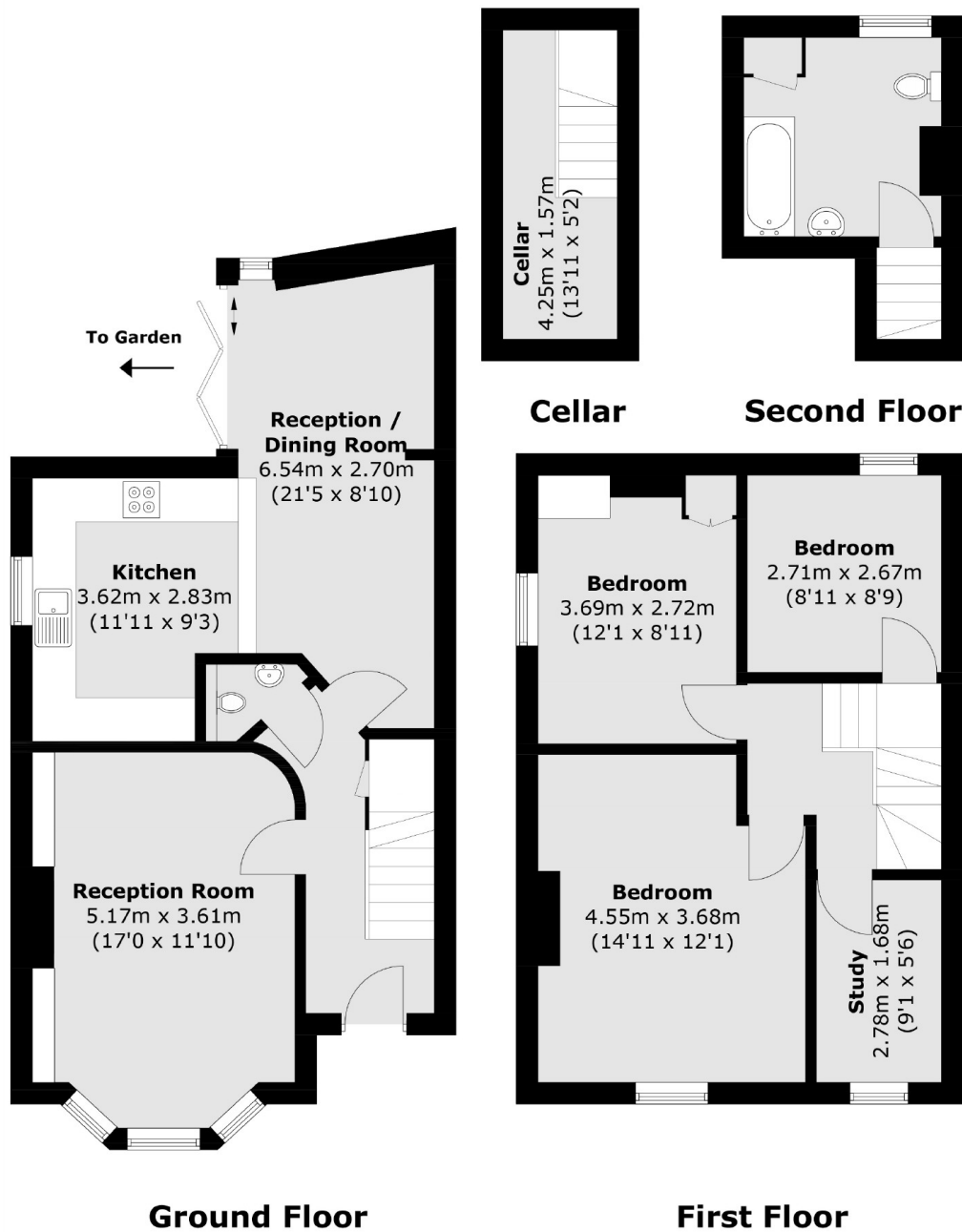
ABOUT THE HOME

A charming four bedroom end of terrace Victorian freehold house in a prime Balham location. Downstairs offers great living space, with a large front reception room, a downstairs loo and a spacious kitchen/diner that leads out onto the garden. Upstairs provides four bedrooms and a modern family bathroom.

Rossiter Road is located in the heart of central Balham and is in close proximity to Balham mainline and underground stations and close to Henry Cavendish primary school (rated outstanding). There are a host of amenities local to the area, including many shops, bars, restaurants and supermarkets. The green open spaces of Tooting Bec Common are just moments away at the bottom of Cavendish Road.







Total area (approx.): 115.3 sq. m (1,241.1 sq. ft)
(Including Cellar)

JACKSONS BALHAM

8-11 Balham Station Road,
London, SW12 9SG
Sales: 020 8675 6555
Lettings: 020 8675 6565

Energy Rating: We aim to make our particulars both accurate and reliable. However they are not guaranteed; nor do they form part of an offer or contract. If you require clarification on any points then please contact us, especially if you're traveling some distance to view. Please note that appliances and heating systems have not been tested and therefore no warranties can be given as to their good working order.