



OAKMEAD ROAD, SW12

£795,000

- Central Location
- Victorian Maisonette
- Large Garden
- Two Double Bedrooms
- Ground Floor
- EPC Rating : C



2



1



2





## ABOUT THE HOME

A beautiful two bedroom ground floor garden maisonette, just moments from Balham station. This immaculately renovated flat offers two bedrooms, a front reception room and an impressive kitchen/diner leading onto a large landscaped private garden.

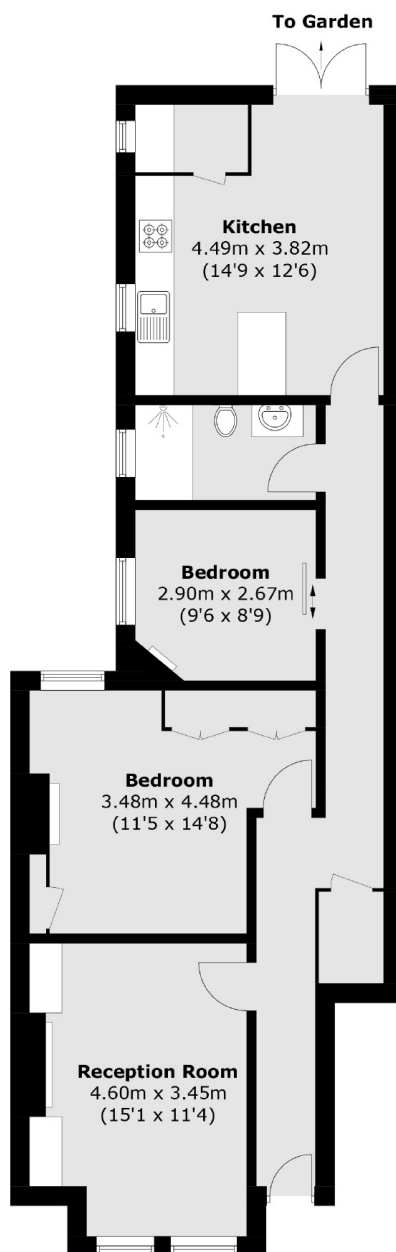
Central Location  
Victorian Maisonette  
Large Garden  
Two Double Bedrooms  
Ground Floor

Oakmead Road is a sought after residential road just moments from Balham mainline and underground stations as well as all of the shops, bars and restaurants local to the area.









Total area (approx.): 77.2 sq. m (831.0 sq. ft)

#### JACKSONS BALHAM

8-11 Balham Station Road,  
London, SW12 9SG  
Sales: 020 8675 6555  
Lettings: 020 8675 6565

Energy Rating: C We aim to make our particulars both accurate and reliable. However they are not guaranteed; nor do they form part of an offer or contract. If you require clarification on any points then please contact us, especially if you're traveling some distance to view. Please note that appliances and heating systems have not been tested and therefore no warranties can be given as to their good working order.