



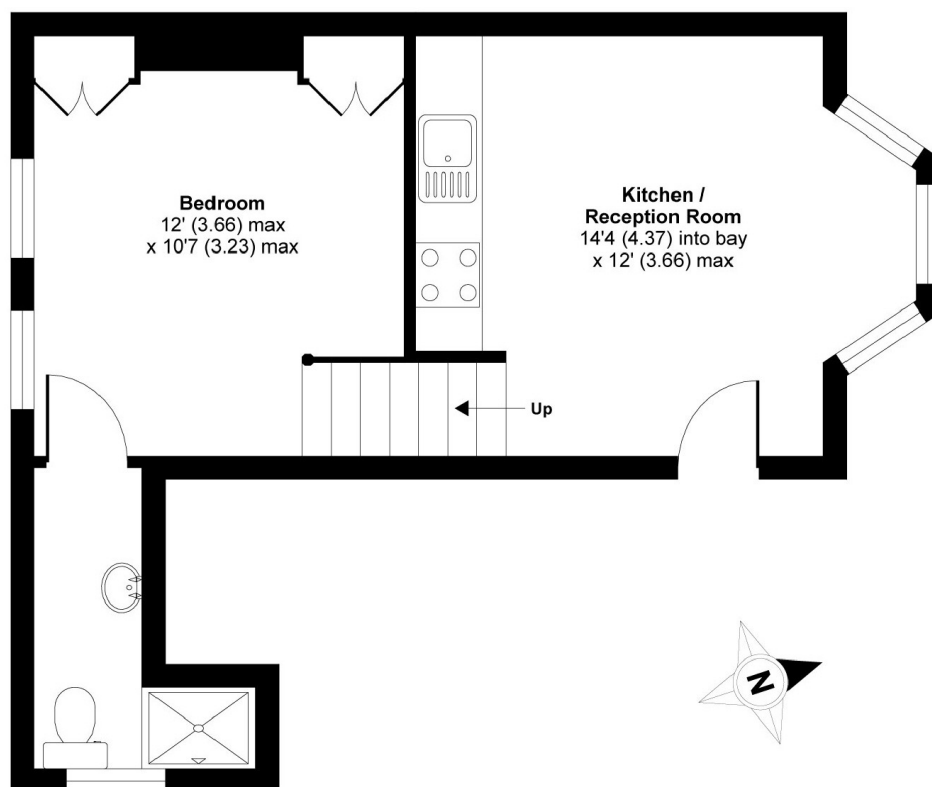
## Endlesham Road, SW12

**£1,350 PCM**

A spacious one bedroom flat located within the ever popular Nightingale Triangle. This property would be suitable for a professional couple or a professional single occupant.

- Period Conversion
- Open Plan
- Integrated Kitchen
- One Bedroom
- Shower Room
- Close To Station

For further information on the costs associated with renting a property, please pop into our office or visit our website.



**GROUND FLOOR**

APPROX. GROSS INTERNAL FLOOR AREA 320 SQ FT 29.7 SQ METRES

**Endlesham Road, London, SW12**

Copyright nichecom.co.uk 2015 Produced for Jacksons the Independent Estate Agents REF : 39162

Jacksons Balham  
8-11 Balham Station Road  
London  
SW12 9SG  
020 8675 6565  
balham.lettings@jacksonsestateagents.com

Energy Rating: D We aim to make our particulars both accurate and reliable. However they are not guaranteed; nor do they form part of an offer or contract. If you require clarification on any points then please contact us, especially if you're traveling some distance to view. Please note that appliances and heating systems have not been tested and therefore no warranties can be given as to their good working order.