



Radbourne Road, SW12

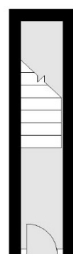
£1,800 PCM

A bright and spacious first floor, one bedroom flat with a private garden. This property would be ideal for a professional couple or a single occupant.

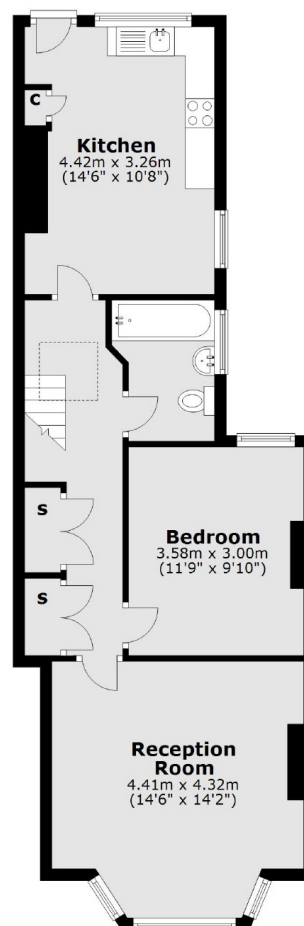
- First Floor Flat
- Reception Room
- Separate Kitchen
- One Double Bedroom
- Private Garden
- Unfurnished

For further information on the costs associated with renting a property, please pop into our office or visit our website.

Ground Floor



First Floor



Total area: approx. 61.3 sq. metres (660.3 sq. feet)

Jacksons Balham
8-11 Balham Station Road
London
SW12 9SG
020 8675 6565
balham.lettings@jacksonsestateagents.com

Energy Rating: C We aim to make our particulars both accurate and reliable. However they are not guaranteed; nor do they form part of an offer or contract. If you require clarification on any points then please contact us, especially if you're traveling some distance to view. Please note that appliances and heating systems have not been tested and therefore no warranties can be given as to their good working order.