



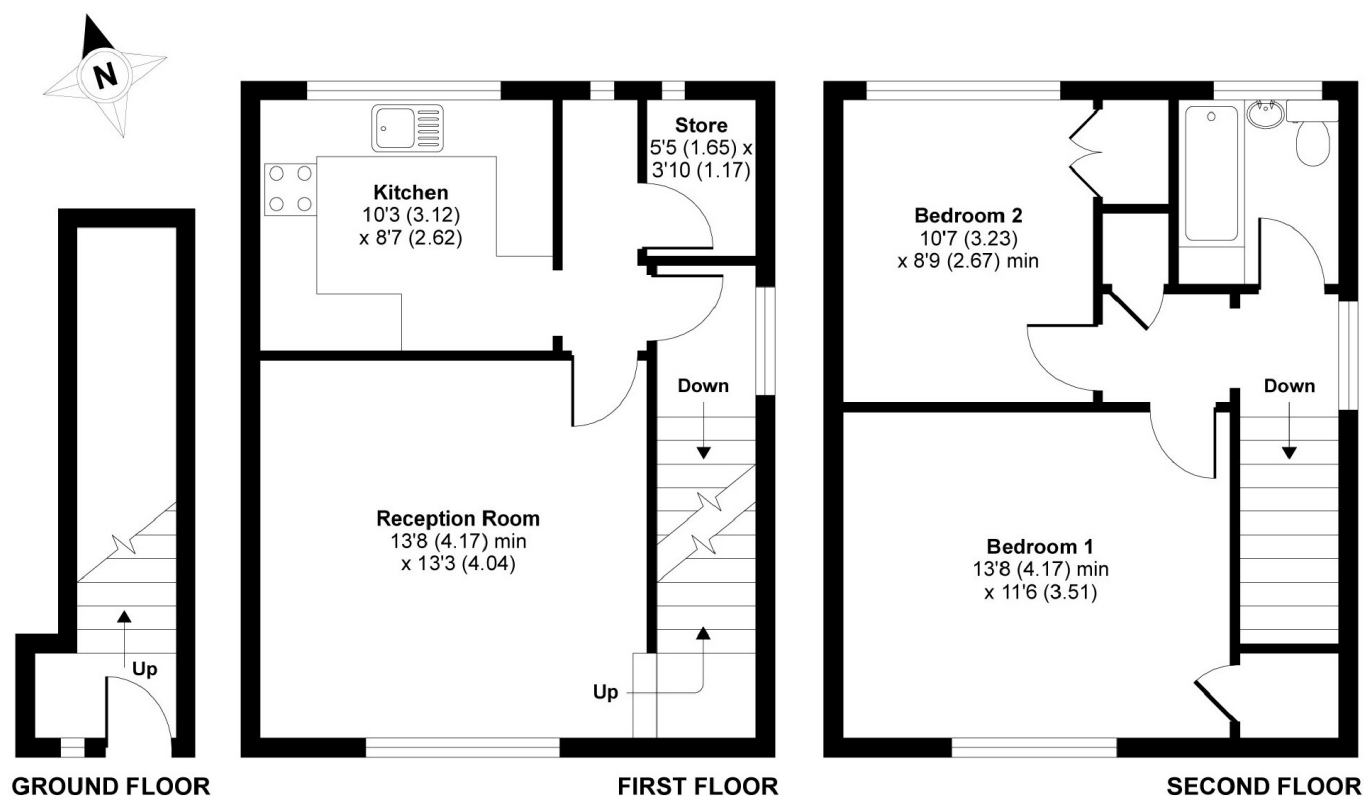
Emmanuel Road, SW12

£1,900 PCM

Overlooking Tooting Bec Common, this two bedroom split-level maisonette offers over 850 sq ft, this home would be a great property for professional sharers or a couple.

- Split-Level
- Reception Room
- Fitted Kitchen
- Two Double Bedrooms
- Opposite the Common
- Part-Furnished

For further information on the costs associated with renting a property, please pop into our office or visit our website.



APPROX. GROSS INTERNAL FLOOR AREA 856 SQ FT 79.5 SQ METRES

Emmanuel Road, London, SW12

Copyright nichecom.co.uk 2014 Produced for Jacksons the Independent Estate Agents REF : 666666

Jacksons Balham
8-11 Balham Station Road
London
SW12 9SG
020 8675 6565
balham.lettings@jacksonsestateagents.com

Energy Rating: E We aim to make our particulars both accurate and reliable. However they are not guaranteed; nor do they form part of an offer or contract. If you require clarification on any points then please contact us, especially if you're traveling some distance to view. Please note that appliances and heating systems have not been tested and therefore no warranties can be given as to their good working order.