



Balham Grove, SW12

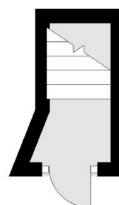
£2,400 PCM

A first floor, three bedroom split level flat located in the heart of Balham. This property would be perfect for professional sharers.

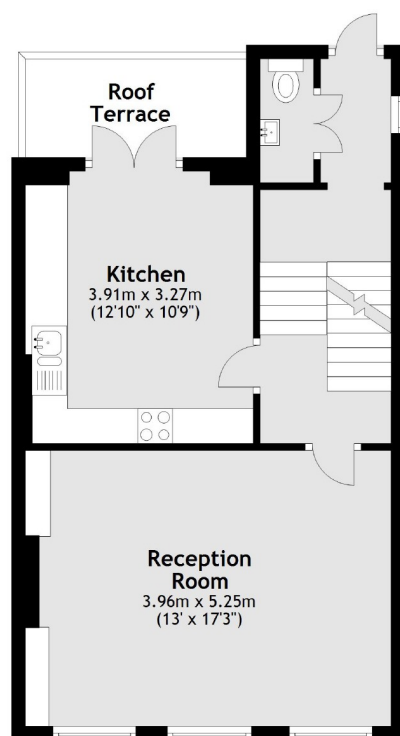
- Split Level
- Reception Room
- Modern Fitted Kitchen
- Three Bedrooms
- Private Section Of Garden
- Close To Balham Station

For further information on the costs associated with renting a property, please pop into our office or visit our website.

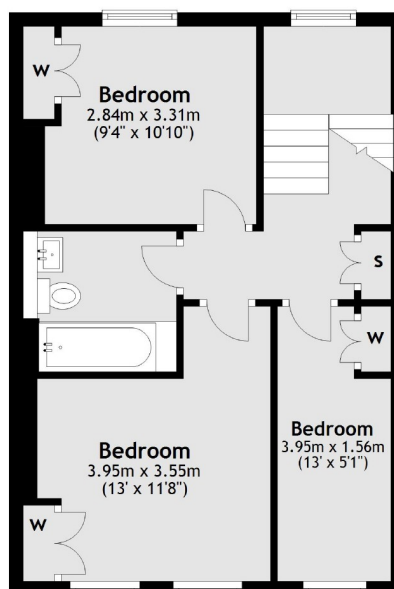
Ground Floor



First Floor



Second Floor



Main area: Approx. 88.8 sq. metres (956.0 sq. feet)

Plus roof terrace, approx. 4.9 sq. metres (53.1 sq. feet)

Jacksons Balham
8-11 Balham Station Road
London
SW12 9SG
020 8675 6565
balham.lettings@jacksonsestateagents.com

Energy Rating: TBC We aim to make our particulars both accurate and reliable. However they are not guaranteed; nor do they form part of an offer or contract. If you require clarification on any points then please contact us, especially if you're traveling some distance to view. Please note that appliances and heating systems have not been tested and therefore no warranties can be given as to their good working order.