



BURNBURY ROAD, SW12

£700,000

- Two Double Bedrooms
- Beautiful Condition
- Ground Floor
- Private Garden
- Hyde Farm Estate
- Energy Rating : C



2



1



2





## ABOUT THE HOME

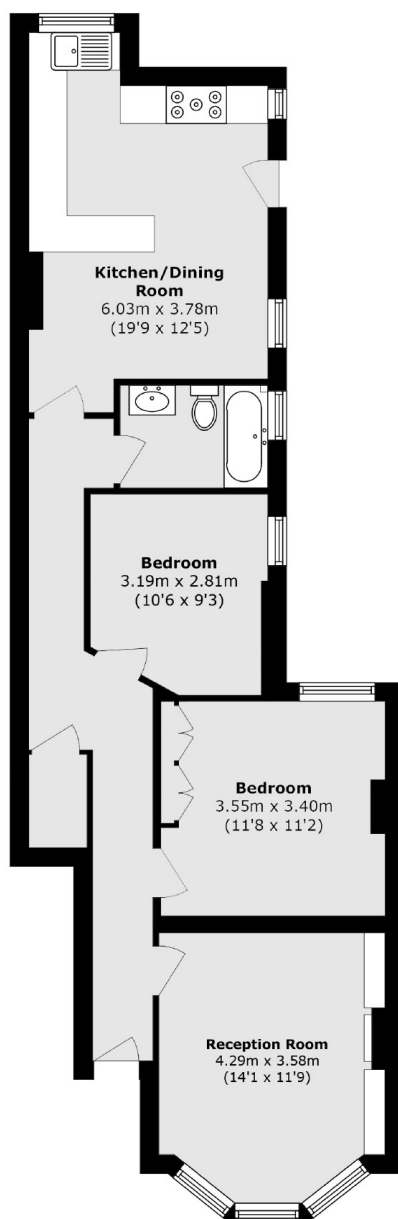
An immaculately presented two bedroom ground floor maisonette finished to high standard throughout. The property features underfloor heating, double glazing throughout and a spacious contemporary kitchen diner with tilt and turn door leading to a private patio garden.

Burnbury Road is part of a wonderful community, is within close proximity to Henry Cavendish and Telferscot Primary schools, and well situated for easy access to Balham mainline and underground stations (Northern Line). Tooting Bec Common, shops, bars, restaurants and other local amenities of Balham are also close by.









Total area (approx.): 73.7 sq. m (793.3 sq. ft)

#### JACKSONS BALHAM

8-11 Balham Station Road,  
London, SW12 9SG  
Sales: 020 8675 6555  
Lettings: 020 8675 6565

Energy Rating: We aim to make our particulars both accurate and reliable. However they are not guaranteed; nor do they form part of an offer or contract. If you require clarification on any points then please contact us, especially if you're traveling some distance to view. Please note that appliances and heating systems have not been tested and therefore no warranties can be given as to their good working order.