



MELLISON ROAD, SW17

£550,000

- Victorian Garden Maisonette
- Two Double Bedrooms
- Large Reception Room
- Kitchen / Breakfast Room
- Private Rear Garden
- Share of Freehold







## ABOUT THE HOME

A well presented two double bedroom, ground floor Victorian maisonette. Presented in excellent order and having just been redecorated throughout, coupled with modern kitchen and bathrooms and double glazed sash windows. Sold with the added benefits of a private rear garden, no onward chain and a share of the freehold. Internally the property amasses 697Sqft and comprises; A generous reception room, two spacious double bedrooms, family bathroom with shower over the bath, a very convenient under-stair storage space and finally kitchen / breakfast room that opens out onto the private west facing rear garden.

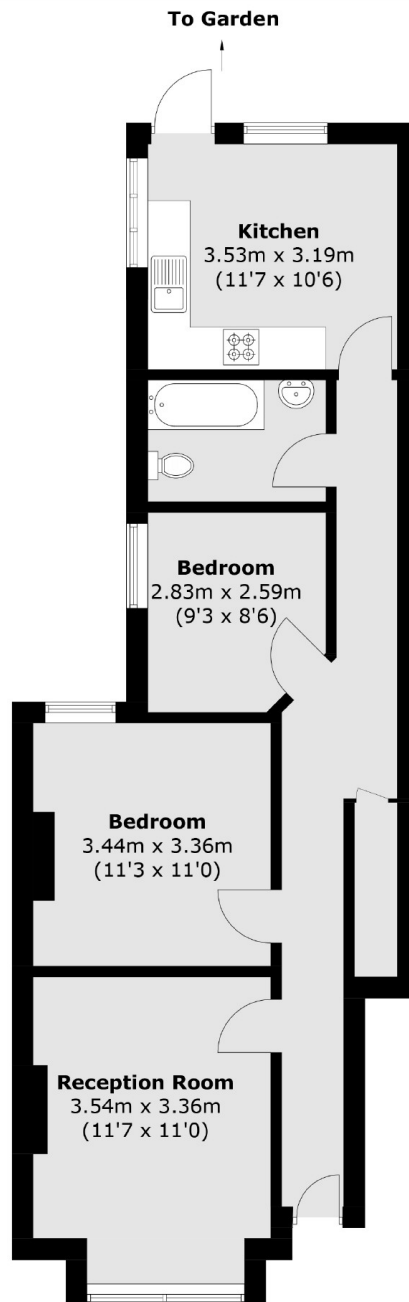
Located on a popular road in the desirable Tooting Broadway, this property is well situated for easy access to the array of shops, bars and restaurants on offer. The wide open spaces of Tooting Bec Common and Wandsworth Common are nearby, as are the excellent transport links including Tooting Broadway underground station and Tooting Rail Station.











Total area (approx.): 64.8 sq. m (697.5 sq. ft)

#### JACKSONS TOOTING

3 Upper Tooting Road, London,

SW17 7TS

Sales: 020 8487 3175

Lettings: 020 8487 3176

Energy Rating: We aim to make our particulars both accurate and reliable. However they are not guaranteed; nor do they form part of an offer or contract. If you require clarification on any points then please contact us, especially if you're traveling some distance to view. Please note that appliances and heating systems have not been tested and therefore no warranties can be given as to their good working order.