

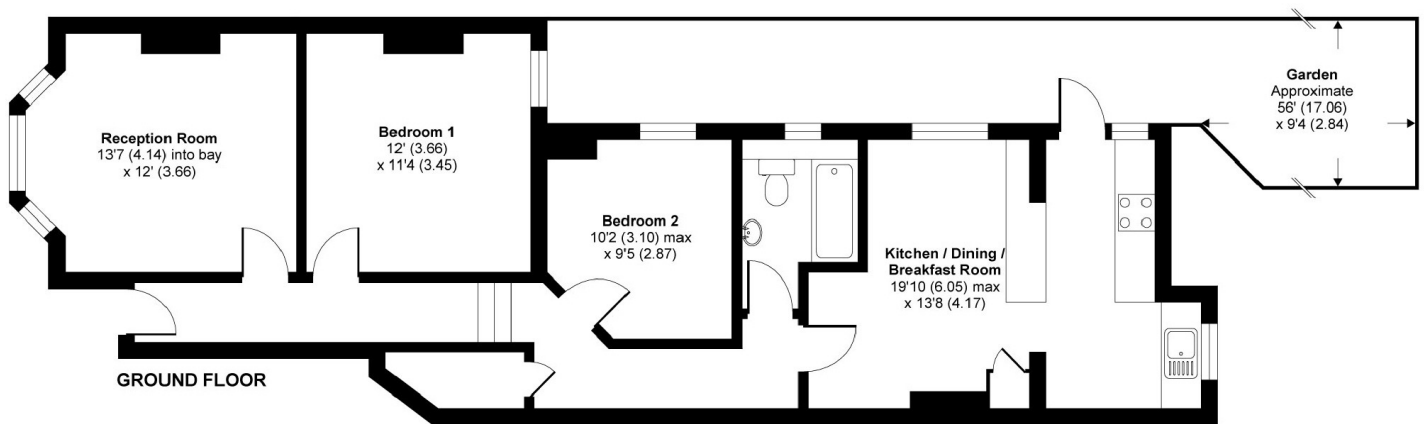


GLENFIELD ROAD, SW12

£2,800 PCM

- Ground floor flat
- Kitchen breakfast room
- Two double bedrooms
- Modern bathroom
- Private garden
- Energy rating: C





APPROX. GROSS INTERNAL FLOOR AREA 824 SQ FT 76.5 SQ METRES

**Glenfield Road, London, SW12**

Copyright nichecom.co.uk 2018 Produced for Jacksons the Independent Estate Agents REF : 247623

### **JACKSONS BALHAM**

8-11 Balham Station Road,  
London, SW12 9SG  
Sales: 020 8675 6555  
Lettings: 020 8675 6565

Energy Rating: C We aim to make our particulars both accurate and reliable. However they are not guaranteed; nor do they form part of an offer or contract. If you require clarification on any points then please contact us, especially if you're traveling some distance to view. Please note that appliances and heating systems have not been tested and therefore no warranties can be given as to their good working order.