

RUDLOE ROAD, SW12

£725,000

- Two Bedrooms
- Ground Floor
- Victorian Flat
- No Onward Chain
- Share Of Freehold
- EPC Rating : C





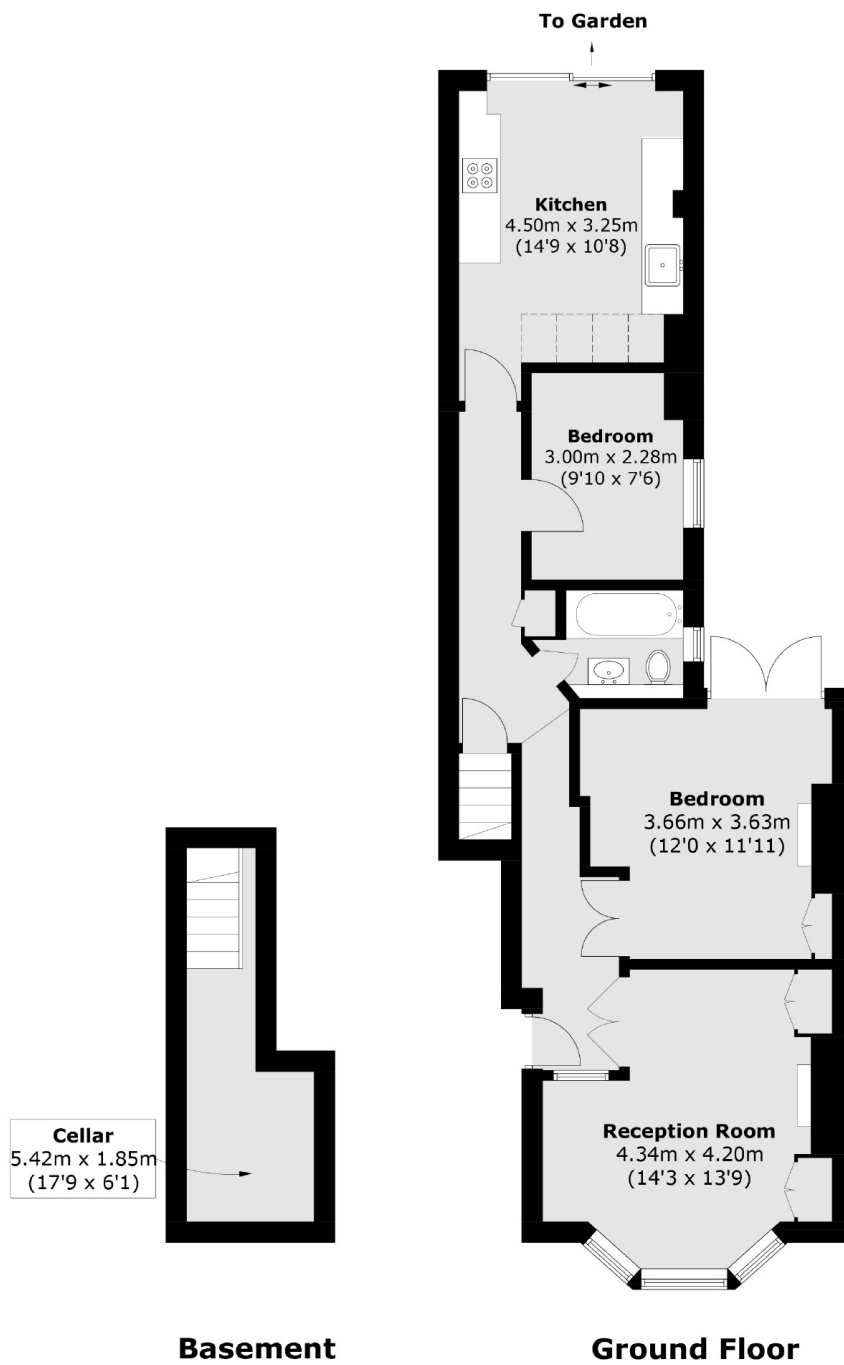
ABOUT THE HOME

A recently renovated two bedroom ground floor garden flat close to both Clapham South and Balham. The property offers a large living room at the front, two bedrooms, a modern bathroom and bright kitchen leading onto a private garden. Many of its original features have been retained with high ceilings, ornate plasterwork & large fireplace in addition to the period bay window & bespoke blinds.

Rudloe Road is located within walking distance of Clapham South and Abbeville Village, both of which boast a selection of shops, bars and restaurants. Clapham South tube station is just 0.4 miles away and is serviced by the Northern Line. It lies within close proximity to Ofsted outstanding schools







Total area (approx.): 72.7 sq. m (782.5 sq. ft)

JACKSONS BALHAM

8-11 Balham Station Road,
London, SW12 9SG
Sales: 020 8675 6555
Lettings: 020 8675 6565

Energy Rating: C We aim to make our particulars both accurate and reliable. However they are not guaranteed; nor do they form part of an offer or contract. If you require clarification on any points then please contact us, especially if you're traveling some distance to view. Please note that appliances and heating systems have not been tested and therefore no warranties can be given as to their good working order.